



ELECTRONIC COPY

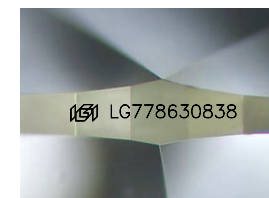
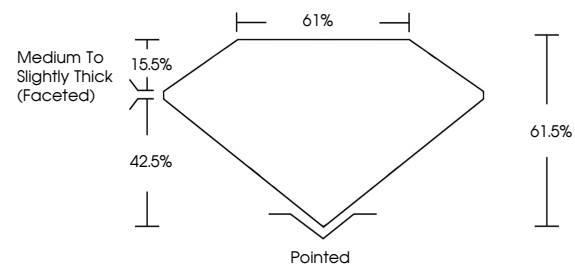
LG778630838
Report verification at igi.org



February 28, 2026
IGI Report Number **LG778630838**
Description **LABORATORY GROWN DIAMOND**
Shape and Cutting Style **PEAR BRILLIANT**
Measurements **8.58 X 5.74 X 3.53 MM**
GRADING RESULTS
Carat Weight **1.04 CARAT**
Color Grade **G**
Clarity Grade **VS 2**

February 28, 2026
IGI Report Number **LG778630838**
Description **LABORATORY GROWN DIAMOND**
Shape and Cutting Style **PEAR BRILLIANT**
Measurements **8.58 X 5.74 X 3.53 MM**

PROPORTIONS

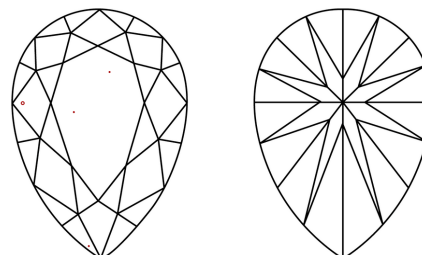


Sample Image Used

GRADING RESULTS

Carat Weight **1.04 CARAT**
Color Grade **G**
Clarity Grade **VS 2**

CLARITY CHARACTERISTICS



KEY TO SYMBOLS

Red symbols indicate internal characteristics.
Green symbols indicate external characteristics.

ADDITIONAL GRADING INFORMATION

Polish **EXCELLENT**
Symmetry **EXCELLENT**
Fluorescence **NONE**
Inscription(s) **IGI LG778630838**

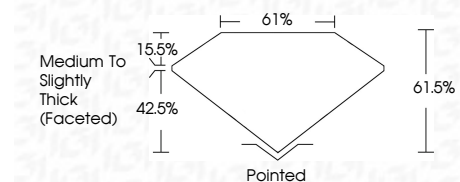
Comments: This Laboratory Grown Diamond was created by Chemical Vapor Deposition (CVD) growth process. Type IIa

COLOR

D E F G H I J Faint Very Light Light

CLARITY

FL	IF	VS ¹⁻²	VS ¹⁻²	SI ¹⁻²	I ¹⁻³
Flawless	Internally Flawless	Very Very Slightly Included	Very Slightly Included	Slightly Included	Included



ADDITIONAL GRADING INFORMATION

Polish **EXCELLENT**
Symmetry **EXCELLENT**
Fluorescence **NONE**
Inscription(s) **IGI LG778630838**
Comments: This Laboratory Grown Diamond was created by Chemical Vapor Deposition (CVD) growth process. Type IIa



IGI



February 28, 2026
IGI Report No LG778630838
PEAR BRILLIANT
8.58 X 5.74 X 3.53 MM
1.04 CARAT
Color Grade **G**
Clarity Grade **VS 2**
Depth **42.5%**
Table **15.5%**
Girdle **Medium to Slightly Thick (Faceted)**
Culet **Pointed**
Polish **EXCELLENT**
Symmetry **EXCELLENT**
Fluorescence **NONE**
Inscription(s) **IGI LG778630838**
Comments: This Laboratory Grown Diamond was created by Chemical Vapor Deposition (CVD) growth process. Type IIa