



**ELECTRONIC COPY**

LG778630608  
Report verification at igi.org



February 28, 2026

IGI Report Number **LG778630608**

Description **LABORATORY GROWN DIAMOND**

Shape and Cutting Style **ROUND BRILLIANT**

Measurements **6.60 - 6.63 X 4.04 MM**

**GRADING RESULTS**

Carat Weight **1.09 CARAT**

Color Grade **D**

Clarity Grade **VS 2**

Cut Grade **IDEAL**

February 28, 2026

IGI Report Number **LG778630608**

Description **LABORATORY GROWN DIAMOND**

Shape and Cutting Style **ROUND BRILLIANT**

Measurements **6.60 - 6.63 X 4.04 MM**

**GRADING RESULTS**

Carat Weight **1.09 CARAT**

Color Grade **D**

Clarity Grade **VS 2**

Cut Grade **IDEAL**

**ADDITIONAL GRADING INFORMATION**

Polish **EXCELLENT**

Symmetry **EXCELLENT**

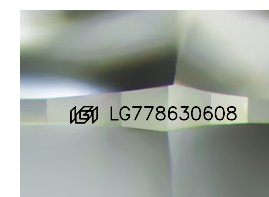
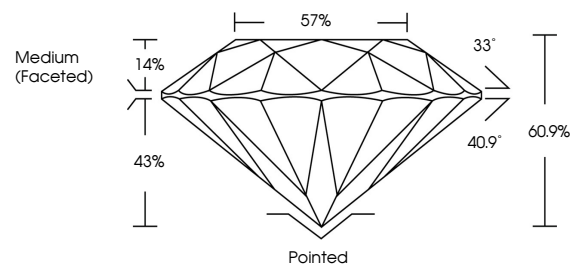
Fluorescence **NONE**

Inscription(s) **LG778630608**

Comments: HEARTS & ARROWS

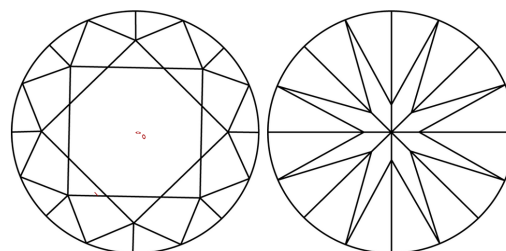
As Grown - No indication of post-growth treatment.  
This Laboratory Grown Diamond was created by High Pressure High Temperature (HPHT) growth process.  
Type II

**PROPORTIONS**



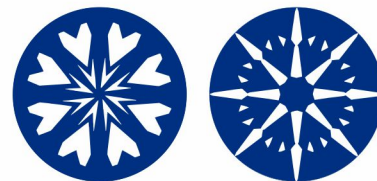
Sample Image Used

**CLARITY CHARACTERISTICS**



**KEY TO SYMBOLS**

Red symbols indicate internal characteristics.  
Green symbols indicate external characteristics.

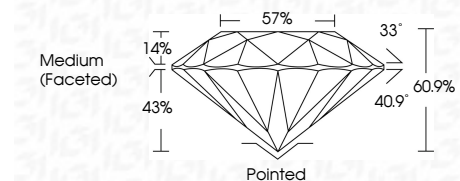


**COLOR**

D E F G H I J Faint Very Light Light

**CLARITY**

FL	IF	VS <sup>1-2</sup>	VS <sup>1-2</sup>	SI <sup>1-2</sup>	I <sup>1-3</sup>
Flawless	Internally Flawless	Very Very Slightly Included	Very Slightly Included	Slightly Included	Included



**ADDITIONAL GRADING INFORMATION**

Polish **EXCELLENT**

Symmetry **EXCELLENT**

Fluorescence **NONE**

Inscription(s) **LG778630608**

Comments: HEARTS & ARROWS

As Grown - No indication of post-growth treatment.  
This Laboratory Grown Diamond was created by High Pressure High Temperature (HPHT) growth process.  
Type II



**IGI**



February 28, 2026	IGI Report No LG778630608	ROUND BRILLIANT	6.60 - 6.63 X 4.04 MM	1.09 CARAT	D	VS 2	IDEAL	60.9%	57%	Medium (Faceted)	Pointed	EXCELLENT	EXCELLENT	NONE	LG778630608
Cut	Polish	Symmetry	Fluorescence	Inscription(s)	Comments: HEARTS & ARROWS	As Grown - No indication of post-growth treatment.	This Laboratory Grown Diamond was created by High Pressure High Temperature (HPHT) growth process.	Type II							