



**ELECTRONIC COPY**

LG778628094  
Report verification at igi.org



February 25, 2026

IGI Report Number **LG778628094**

Description **LABORATORY GROWN DIAMOND**

Shape and Cutting Style **OVAL BRILLIANT**

Measurements **10.55 X 5.90 X 3.76 MM**

**GRADING RESULTS**

Carat Weight **1.53 CARAT**

Color Grade **D**

Clarity Grade **VVS 2**

February 25, 2026  
IGI Report Number **LG778628094**  
Description **LABORATORY GROWN DIAMOND**  
Shape and Cutting Style **OVAL BRILLIANT**  
Measurements **10.55 X 5.90 X 3.76 MM**

**GRADING RESULTS**

Carat Weight **1.53 CARAT**

Color Grade **D**

Clarity Grade **VVS 2**

**ADDITIONAL GRADING INFORMATION**

Polish **EXCELLENT**

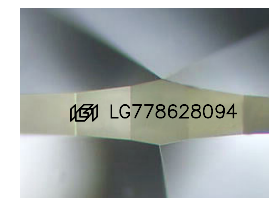
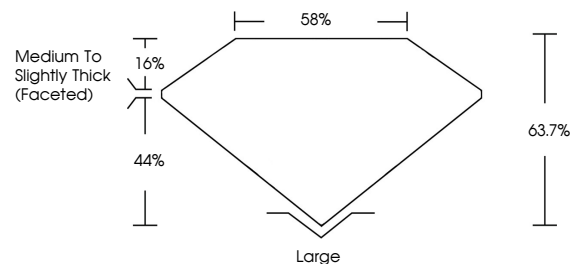
Symmetry **EXCELLENT**

Fluorescence **NONE**

Inscription(s) **IGI LG778628094**

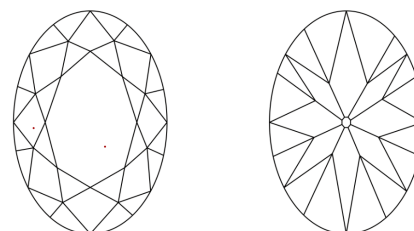
Comments: This Laboratory Grown Diamond was created by Chemical Vapor Deposition (CVD) growth process. Type IIa

**PROPORTIONS**



Sample Image Used

**CLARITY CHARACTERISTICS**



**KEY TO SYMBOLS**

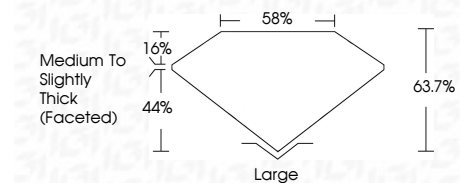
Red symbols indicate internal characteristics.  
Green symbols indicate external characteristics.

**COLOR**

D E F G H I J Faint Very Light Light

**CLARITY**

FL	IF	VVS <sup>1-2</sup>	VS <sup>1-2</sup>	SI <sup>1-2</sup>	I <sup>1-3</sup>
Flawless	Internally Flawless	Very Very Slightly Included	Very Slightly Included	Slightly Included	Included



**ADDITIONAL GRADING INFORMATION**

Polish **EXCELLENT**

Symmetry **EXCELLENT**

Fluorescence **NONE**

Inscription(s) **IGI LG778628094**

Comments: This Laboratory Grown Diamond was created by Chemical Vapor Deposition (CVD) growth process. Type IIa



February 25, 2026  
IGI Report No LG778628094  
OVAL BRILLIANT  
1.53 CARAT  
Carat Weight  
Color Grade D  
Clarity Grade VVS 2  
Depth 63.7%  
Table 16%  
Girdle Medium to Slightly Thick (Faceted)  
Culet Large  
Polish EXCELLENT  
Symmetry EXCELLENT  
Fluorescence NONE  
Inscription(s) IGI LG778628094  
Comments: This Laboratory Grown Diamond was created by Chemical Vapor Deposition (CVD) growth process. Type IIa