



ELECTRONIC COPY

LG778615730
Report verification at igi.org



March 5, 2026
IGI Report Number LG778615730
Description LABORATORY GROWN DIAMOND
Shape and Cutting Style SQUARE CUSHION MODIFIED BRILLIANT
Measurements 5.54 X 5.52 X 3.70 MM
GRADING RESULTS
Carat Weight 1.05 CARAT
Color Grade FANCY INTENSE YELLOW
Clarity Grade VVS 2

March 5, 2026
IGI Report Number LG778615730
Description LABORATORY GROWN DIAMOND
Shape and Cutting Style SQUARE CUSHION MODIFIED BRILLIANT
Measurements 5.54 X 5.52 X 3.70 MM

GRADING RESULTS

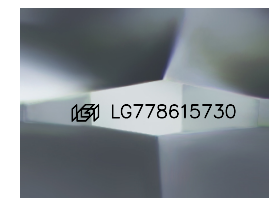
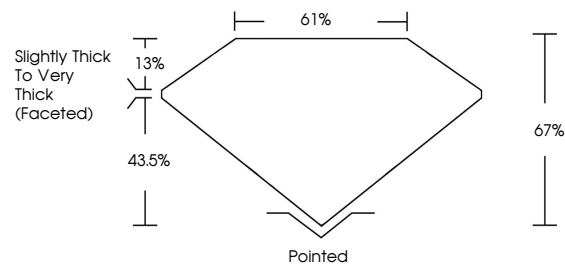
Carat Weight 1.05 CARAT
Color Grade FANCY INTENSE YELLOW
Clarity Grade VVS 2

ADDITIONAL GRADING INFORMATION

Polish EXCELLENT
Symmetry EXCELLENT
Fluorescence NONE
Inscription(s) LG778615730

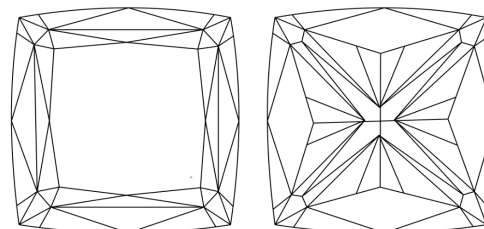
Comments: This Laboratory Grown Diamond was created by Chemical Vapor Deposition (CVD) growth process.

PROPORTIONS



Sample Image Used

CLARITY CHARACTERISTICS



KEY TO SYMBOLS

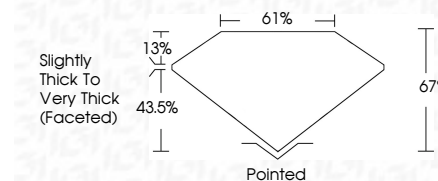
Red symbols indicate internal characteristics.
Green symbols indicate external characteristics.

COLOR

D E F G H I J Faint Very Light Light

CLARITY

FL IF VVS 1-2 VS 1-2 SI 1-2 I 1-3
Flawless Internally Flawless Very Very Slightly Included Very Slightly Included Slightly Included Included



ADDITIONAL GRADING INFORMATION

Polish EXCELLENT
Symmetry EXCELLENT
Fluorescence NONE
Inscription(s) LG778615730
Comments: This Laboratory Grown Diamond was created by Chemical Vapor Deposition (CVD) growth process.



March 5, 2026
IGI Report No LG778615730
SQUARE CUSHION MODIFIED BRILLIANT
1.05 CARAT
FANCY INTENSE YELLOW
VVS 2
5.54 X 5.52 X 3.70 MM
EXCELLENT
EXCELLENT
NONE
LG778615730
Comments: This Laboratory Grown Diamond was created by Chemical Vapor Deposition (CVD) growth process.