



ELECTRONIC COPY

LG778615676
Report verification at igi.org



March 5, 2026
IGI Report Number LG778615676
Description LABORATORY GROWN DIAMOND
Shape and Cutting Style CUT CORNERED RECTANGULAR MODIFIED BRILLIANT
Measurements 8.77 X 6.10 X 4.14 MM
GRADING RESULTS
Carat Weight 2.07 CARATS
Color Grade FANCY VIVID PINK
Clarity Grade VVS 2

March 5, 2026
IGI Report Number LG778615676
Description LABORATORY GROWN DIAMOND
Shape and Cutting Style CUT CORNERED RECTANGULAR MODIFIED BRILLIANT
Measurements 8.77 X 6.10 X 4.14 MM

GRADING RESULTS

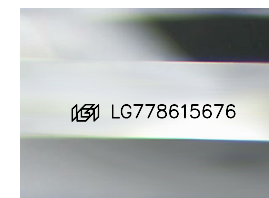
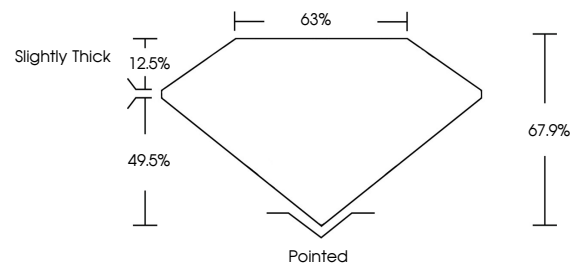
Carat Weight 2.07 CARATS
Color Grade FANCY VIVID PINK
Clarity Grade VVS 2

ADDITIONAL GRADING INFORMATION

Polish EXCELLENT
Symmetry EXCELLENT
Fluorescence SLIGHT
Inscription(s) LG778615676

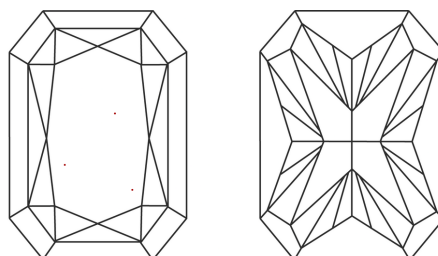
Comments: This Laboratory Grown Diamond was created by Chemical Vapor Deposition (CVD) growth process.
Indications of post-growth treatment.

PROPORTIONS



Sample Image Used

CLARITY CHARACTERISTICS



KEY TO SYMBOLS

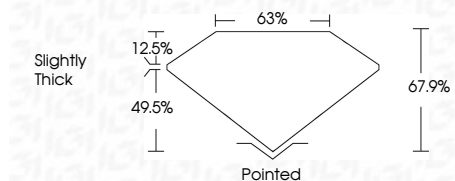
Red symbols indicate internal characteristics.
Green symbols indicate external characteristics.

COLOR

D E F G H I J Faint Very Light Light

CLARITY

FL IF VVS 1-2 VS 1-2 SI 1-2 I 1-3
Flawless Internally Flawless Very Very Slightly Included Very Slightly Included Slightly Included Included



ADDITIONAL GRADING INFORMATION

Polish EXCELLENT
Symmetry EXCELLENT
Fluorescence SLIGHT
Inscription(s) LG778615676
Comments: This Laboratory Grown Diamond was created by Chemical Vapor Deposition (CVD) growth process.
Indications of post-growth treatment.



March 5, 2026
IGI Report No LG778615676
CUT CORNERED RECT. MODIFIED BRILLIANT
8.77 X 6.10 X 4.14 MM
2.07 CARATS
FANCY VIVID PINK
VVS 2
67.9%
63%
Slightly Thick
Pointed
EXCELLENT
EXCELLENT
SLIGHT
LG778615676
Comments: This Laboratory Grown Diamond was created by Chemical Vapor Deposition (CVD) growth process.
Indications of post-growth treatment.