



ELECTRONIC COPY

LG778615670
Report verification at igi.org



March 5, 2026

IGI Report Number LG778615670

Description LABORATORY GROWN DIAMOND

Shape and Cutting Style CUT CORNERED RECTANGULAR MODIFIED BRILLIANT

Measurements 6.97 X 4.87 X 3.30 MM

GRADING RESULTS

Carat Weight 1.05 CARAT

Color Grade FANCY VIVID PINK

Clarity Grade VVS 2

March 5, 2026

IGI Report Number LG778615670

Description LABORATORY GROWN DIAMOND

Shape and Cutting Style CUT CORNERED RECTANGULAR MODIFIED BRILLIANT

Measurements 6.97 X 4.87 X 3.30 MM

GRADING RESULTS

Carat Weight 1.05 CARAT

Color Grade FANCY VIVID PINK

Clarity Grade VVS 2

ADDITIONAL GRADING INFORMATION

Polish EXCELLENT

Symmetry EXCELLENT

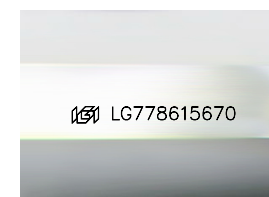
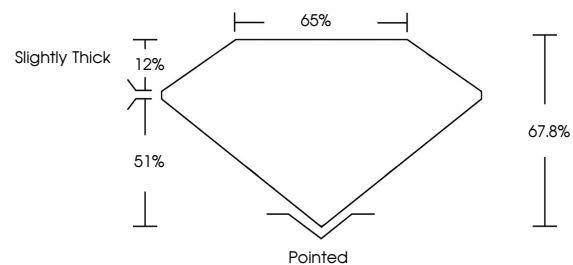
Fluorescence STRONG

Inscription(s) LG778615670

Comments: This Laboratory Grown Diamond was created by Chemical Vapor Deposition (CVD) growth process.

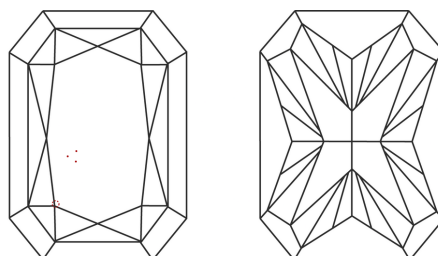
Indications of post-growth treatment.

PROPORTIONS



Sample Image Used

CLARITY CHARACTERISTICS



KEY TO SYMBOLS

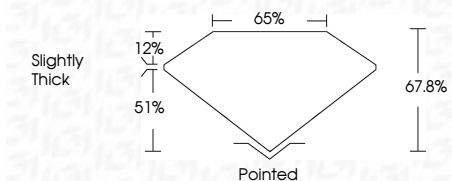
Red symbols indicate internal characteristics. Green symbols indicate external characteristics.

COLOR

D E F G H I J Faint Very Light Light

CLARITY

FL IF VVS 1-2 VS 1-2 SI 1-2 I 1-3
Flawless Internally Flawless Very Very Slightly Included Very Slightly Included Slightly Included Included



ADDITIONAL GRADING INFORMATION

Polish EXCELLENT

Symmetry EXCELLENT

Fluorescence STRONG

Inscription(s) LG778615670

Comments: This Laboratory Grown Diamond was created by Chemical Vapor Deposition (CVD) growth process. Indications of post-growth treatment.



March 5, 2026
IGI Report No LG778615670
CUT CORNERED RECT. MODIFIED BRILLIANT
6.97 X 4.87 X 3.30 MM
1.05 CARAT
FANCY VIVID PINK
VVS 2
67.8%
Slightly Thick
Pointed
EXCELLENT
EXCELLENT
STRONG
IGI LG778615670
Comments: This Laboratory Grown Diamond was created by Chemical Vapor Deposition (CVD) growth process. Indications of post-growth treatment.