



ELECTRONIC COPY

LABORATORY GROWN DIAMOND REPORT

March 3, 2026  
IGI Report Number LG778615060  
Description LABORATORY GROWN DIAMOND  
Shape and Cutting Style CUT CORNERED RECTANGULAR MODIFIED BRILLIANT  
Measurements 10.90 X 7.08 X 4.49 MM

GRADING RESULTS

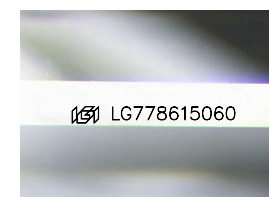
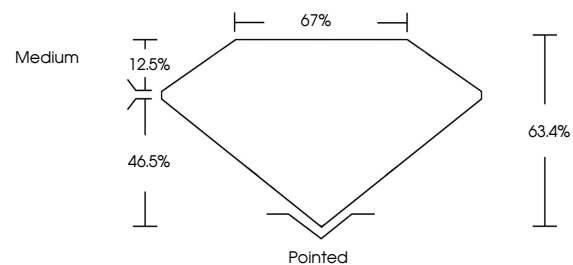
Carat Weight 3.02 CARATS  
Color Grade FANCY INTENSE PINK  
Clarity Grade VS 1

ADDITIONAL GRADING INFORMATION

Polish EXCELLENT  
Symmetry EXCELLENT  
Fluorescence SLIGHT  
Inscription(s) LG778615060

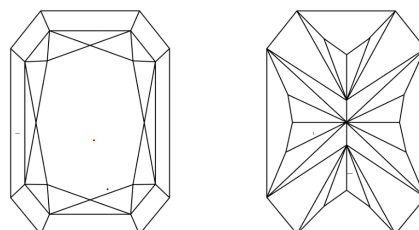
Comments: This Laboratory Grown Diamond was created by Chemical Vapor Deposition (CVD) growth process.  
Indications of post-growth treatment.

PROPORTIONS



Sample Image Used

CLARITY CHARACTERISTICS



KEY TO SYMBOLS

Red symbols indicate internal characteristics.  
Green symbols indicate external characteristics.

COLOR

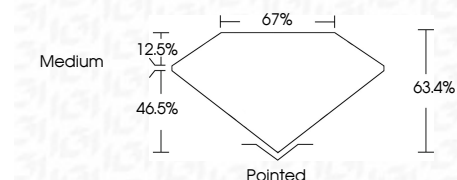
D E F G H I J Faint Very Light Light

CLARITY

FL IF VS<sup>1-2</sup> VS<sup>1-2</sup> SI<sup>1-2</sup> I<sup>1-3</sup>  
Flawless Internally Flawless Very Very Slightly Included Very Slightly Included Slightly Included Included



March 3, 2026  
IGI Report Number LG778615060  
Description LABORATORY GROWN DIAMOND  
Shape and Cutting Style CUT CORNERED RECTANGULAR MODIFIED BRILLIANT  
Measurements 10.90 X 7.08 X 4.49 MM  
GRADING RESULTS  
Carat Weight 3.02 CARATS  
Color Grade FANCY INTENSE PINK  
Clarity Grade VS 1



ADDITIONAL GRADING INFORMATION

Polish EXCELLENT  
Symmetry EXCELLENT  
Fluorescence SLIGHT  
Inscription(s) LG778615060  
Comments: This Laboratory Grown Diamond was created by Chemical Vapor Deposition (CVD) growth process.  
Indications of post-growth treatment.



March 3, 2026  
IGI Report No LG778615060  
CUT CORNERED RECT. MODIFIED BRILLIANT  
10.90 X 7.08 X 4.49 MM  
3.02 CARATS  
FANCY INTENSE PINK  
VS 1  
63.4%  
67%  
Medium  
Pointed  
EXCELLENT  
EXCELLENT  
SLIGHT  
IGI LG778615060  
Comments: This Laboratory Grown Diamond was created by Chemical Vapor Deposition (CVD) growth process.  
Indications of post-growth treatment.