



ELECTRONIC COPY

LG778615048 Report verification at igi.org



March 5, 2026 IGI Report Number LG778615048 Description LABORATORY GROWN DIAMOND Shape and Cutting Style CUSHION MODIFIED BRILLIANT Measurements 8.73 X 6.48 X 3.93 MM GRADING RESULTS Carat Weight 2.02 CARATS Color Grade FANCY INTENSE PINK Clarity Grade VVS 2

March 5, 2026 IGI Report Number LG778615048 Description LABORATORY GROWN DIAMOND Shape and Cutting Style CUSHION MODIFIED BRILLIANT Measurements 8.73 X 6.48 X 3.93 MM

GRADING RESULTS

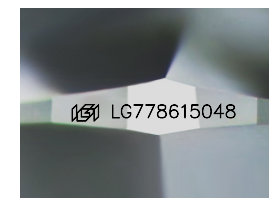
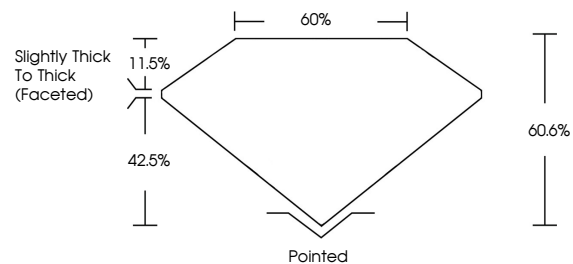
Carat Weight 2.02 CARATS Color Grade FANCY INTENSE PINK Clarity Grade VVS 2

ADDITIONAL GRADING INFORMATION

Polish EXCELLENT Symmetry EXCELLENT Fluorescence SLIGHT Inscription(s) IGI LG778615048

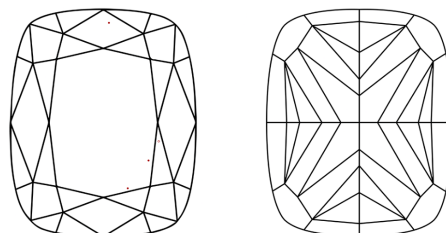
Comments: This Laboratory Grown Diamond was created by Chemical Vapor Deposition (CVD) growth process. Indications of post-growth treatment.

PROPORTIONS



Sample Image Used

CLARITY CHARACTERISTICS



KEY TO SYMBOLS

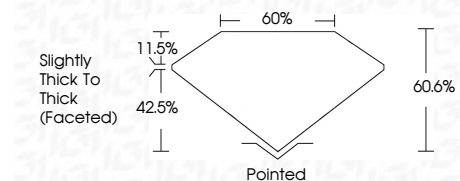
Red symbols indicate internal characteristics. Green symbols indicate external characteristics.

COLOR

D E F G H I J Faint Very Light Light

CLARITY

FL IF VVS 1-2 VS 1-2 SI 1-2 I 1-3 Flawless Internally Flawless Very Very Slightly Included Very Slightly Included Slightly Included Included



ADDITIONAL GRADING INFORMATION

Polish EXCELLENT Symmetry EXCELLENT Fluorescence SLIGHT Inscription(s) IGI LG778615048 Comments: This Laboratory Grown Diamond was created by Chemical Vapor Deposition (CVD) growth process. Indications of post-growth treatment.



March 5, 2026 IGI Report No LG778615048 CUSHION MODIFIED BRILLIANT 2.02 CARATS FANCY INTENSE PINK VVS 2 8.73 X 6.48 X 3.93 MM 60.6% 42.5% Slightly Thick To Thick (Faceted) Pointed EXCELLENT EXCELLENT SLIGHT IGI LG778615048 Comments: This Laboratory Grown Diamond was created by Chemical Vapor Deposition (CVD) growth process. Indications of post-growth treatment.