



ELECTRONIC COPY

LG778615041
Report verification at igi.org



March 6, 2026
IGI Report Number **LG778615041**
Description **LABORATORY GROWN DIAMOND**
Shape and Cutting Style **CUSHION BRILLIANT**
Measurements **7.20 X 5.51 X 3.37 MM**
GRADING RESULTS
Carat Weight **1.05 CARAT**
Color Grade **FANCY INTENSE PINK**
Clarity Grade **VVS 2**

March 6, 2026
IGI Report Number **LG778615041**
Description **LABORATORY GROWN DIAMOND**
Shape and Cutting Style **CUSHION BRILLIANT**
Measurements **7.20 X 5.51 X 3.37 MM**

GRADING RESULTS

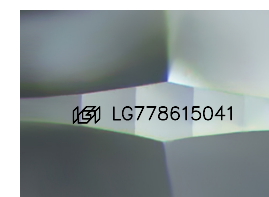
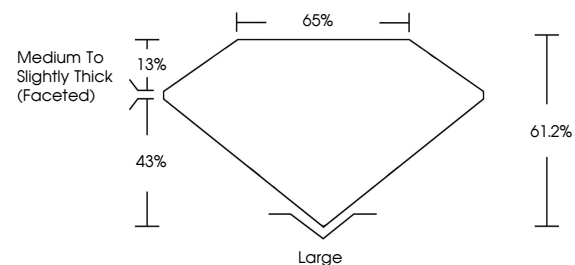
Carat Weight **1.05 CARAT**
Color Grade **FANCY INTENSE PINK**
Clarity Grade **VVS 2**

ADDITIONAL GRADING INFORMATION

Polish **EXCELLENT**
Symmetry **EXCELLENT**
Fluorescence **SLIGHT**
Inscription(s) **IGI LG778615041**

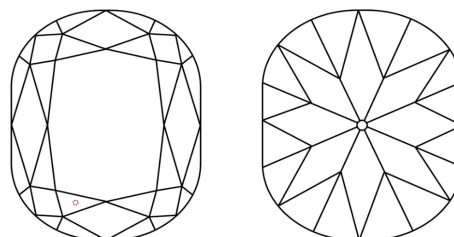
Comments: This Laboratory Grown Diamond was created by Chemical Vapor Deposition (CVD) growth process.
Indications of post-growth treatment.

PROPORTIONS



Sample Image Used

CLARITY CHARACTERISTICS



KEY TO SYMBOLS

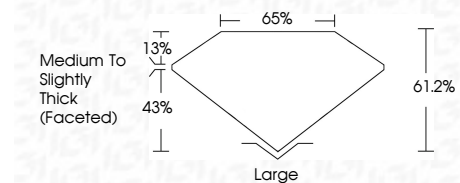
Red symbols indicate internal characteristics.
Green symbols indicate external characteristics.

COLOR

D E F G H I J Faint Very Light Light

CLARITY

FL	IF	VVS ¹⁻²	VS ¹⁻²	SI ¹⁻²	I ¹⁻³
Flawless	Internally Flawless	Very Very Slightly Included	Very Slightly Included	Slightly Included	Included



ADDITIONAL GRADING INFORMATION

Polish **EXCELLENT**
Symmetry **EXCELLENT**
Fluorescence **SLIGHT**
Inscription(s) **IGI LG778615041**
Comments: This Laboratory Grown Diamond was created by Chemical Vapor Deposition (CVD) growth process.
Indications of post-growth treatment.



March 6, 2026
IGI Report No **LG778615041**
CUSHION BRILLIANT
7.20 X 5.51 X 3.37 MM
Carat Weight **1.05 CARAT**
Color Grade **FANCY INTENSE PINK**
Clarity Grade **VVS 2**
Depth **61.2%**
Table **65%**
Girdle **Medium to Slightly Thick (Faceted)**
Culet **Large**
Polish **EXCELLENT**
Symmetry **EXCELLENT**
Fluorescence **SLIGHT**
Inscription(s) **IGI LG778615041**
Comments: This Laboratory Grown Diamond was created by Chemical Vapor Deposition (CVD) growth process.
Indications of post-growth treatment.