



**ELECTRONIC COPY**

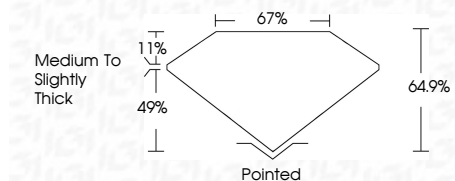
LG778615030  
Report verification at igi.org



March 3, 2026  
IGI Report Number **LG778615030**  
Description **LABORATORY GROWN DIAMOND**  
Shape and Cutting Style **CUT CORNERED  
RECTANGULAR MODIFIED  
BRILLIANT**  
Measurements **7.26 X 5.27 X 3.42 MM**

**GRADING RESULTS**

Carat Weight **1.11 CARAT**  
Color Grade **FANCY VIVID GREEN**  
Clarity Grade **VVS 2**



**ADDITIONAL GRADING INFORMATION**

Polish **VERY GOOD**  
Symmetry **EXCELLENT**  
Fluorescence **NONE**  
Inscription(s) **IGI LG778615030**  
Comments: This Laboratory Grown Diamond was created by Chemical Vapor Deposition (CVD) growth process. Indications of post-growth treatment.



March 3, 2026  
IGI Report No LG778615030  
CUT CORNERED RECT. MODIFIED BRILLIANT  
7.26 X 5.27 X 3.42 MM  
1.11 CARAT  
FANCY VIVID GREEN  
VVS 2  
64.9%  
11%  
67%  
Medium to Slightly Thick  
Pointed  
VERY GOOD  
EXCELLENT  
NONE  
IGI LG778615030

Comments: This Laboratory Grown Diamond was created by Chemical Vapor Deposition (CVD) growth process. Indications of post-growth treatment.

**LABORATORY GROWN DIAMOND REPORT**

March 3, 2026  
IGI Report Number **LG778615030**  
Description **LABORATORY GROWN DIAMOND**  
Shape and Cutting Style **CUT CORNERED RECTANGULAR  
MODIFIED BRILLIANT**  
Measurements **7.26 X 5.27 X 3.42 MM**

**GRADING RESULTS**

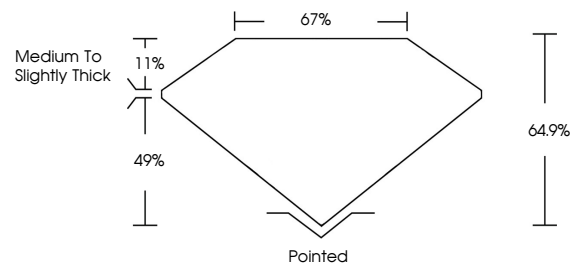
Carat Weight **1.11 CARAT**  
Color Grade **FANCY VIVID GREEN**  
Clarity Grade **VVS 2**

**ADDITIONAL GRADING INFORMATION**

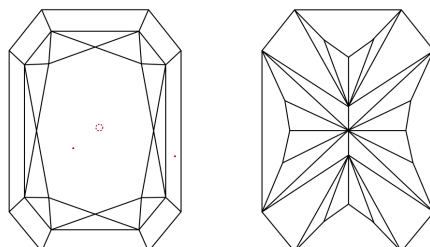
Polish **VERY GOOD**  
Symmetry **EXCELLENT**  
Fluorescence **NONE**  
Inscription(s) **IGI LG778615030**

Comments: This Laboratory Grown Diamond was created by Chemical Vapor Deposition (CVD) growth process. Indications of post-growth treatment.

**PROPORTIONS**

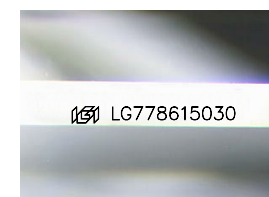


**CLARITY CHARACTERISTICS**



**KEY TO SYMBOLS**

Red symbols indicate internal characteristics.  
Green symbols indicate external characteristics.



Sample Image Used

**COLOR**

D E F G H I J Faint Very Light Light

**CLARITY**

FL	IF	VVS <sup>1-2</sup>	VS <sup>1-2</sup>	SI <sup>1-2</sup>	I <sup>1-3</sup>
Flawless	Internally Flawless	Very Very Slightly Included	Very Slightly Included	Slightly Included	Included

