



ELECTRONIC COPY

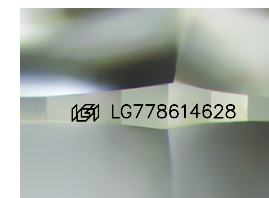
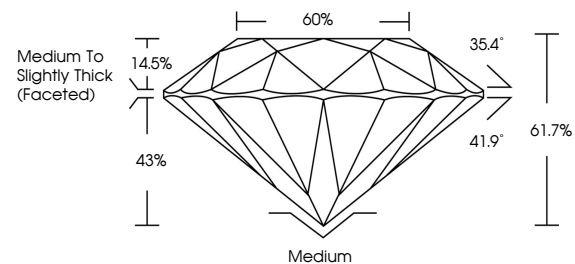
LG778614628
Report verification at igi.org



March 6, 2026
IGI Report Number **LG778614628**
Description **LABORATORY GROWN DIAMOND**
Shape and Cutting Style **ROUND BRILLIANT**
Measurements **6.50 - 6.51 X 4.01 MM**
GRADING RESULTS
Carat Weight **1.10 CARAT**
Color Grade **H**
Clarity Grade **VS 2**
Cut Grade **EXCELLENT**

March 6, 2026
IGI Report Number **LG778614628**
Description **LABORATORY GROWN DIAMOND**
Shape and Cutting Style **ROUND BRILLIANT**
Measurements **6.50 - 6.51 X 4.01 MM**

PROPORTIONS

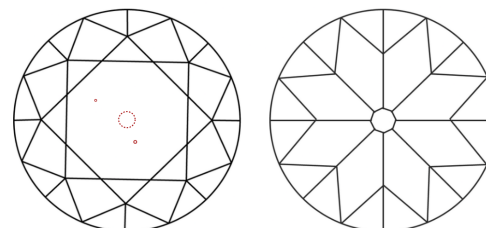


Sample Image Used

GRADING RESULTS

Carat Weight **1.10 CARAT**
Color Grade **H**
Clarity Grade **VS 2**
Cut Grade **EXCELLENT**

CLARITY CHARACTERISTICS



KEY TO SYMBOLS

Red symbols indicate internal characteristics.
Green symbols indicate external characteristics.

ADDITIONAL GRADING INFORMATION

Polish **EXCELLENT**
Symmetry **EXCELLENT**
Fluorescence **NONE**
Inscription(s) **IGI LG778614628**

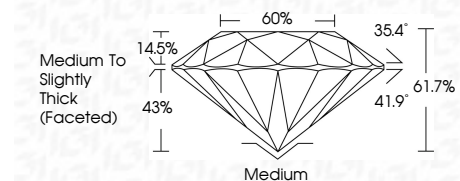
Comments: This Laboratory Grown Diamond was created by Chemical Vapor Deposition (CVD) growth process.
Type IIa

COLOR

D E F G H I J Faint Very Light Light

CLARITY

FL	IF	VS ¹⁻²	VS ¹⁻²	SI ¹⁻²	I ¹⁻³
Flawless	Internally Flawless	Very Very Slightly Included	Very Slightly Included	Slightly Included	Included



ADDITIONAL GRADING INFORMATION

Polish **EXCELLENT**
Symmetry **EXCELLENT**
Fluorescence **NONE**
Inscription(s) **IGI LG778614628**
Comments: This Laboratory Grown Diamond was created by Chemical Vapor Deposition (CVD) growth process.
Type IIa



March 6, 2026
IGI Report No LG778614628
ROUND BRILLIANT
6.50 - 6.51 X 4.01 MM
1.10 CARAT
H
Color Grade **EXCELLENT**
VS 2
Clarity Grade **EXCELLENT**
61.7%
Depth
60%
Table
Medium To Slightly Thick (Faceted)
Girdle
Medium
Culet **EXCELLENT**
Polish **EXCELLENT**
Symmetry **EXCELLENT**
Fluorescence **NONE**
Inscription(s) **IGI LG778614628**
Comments: This Laboratory Grown Diamond was created by Chemical Vapor Deposition (CVD) growth process.
Type IIa