



ELECTRONIC COPY

LG778614220
Report verification at igi.org



March 3, 2026
IGI Report Number **LG778614220**
Description **LABORATORY GROWN DIAMOND**
Shape and Cutting Style **CUT CORNERED
RECTANGULAR MODIFIED
BRILLIANT**
Measurements **11.43 X 7.49 X 5.12 MM**
GRADING RESULTS
Carat Weight **3.69 CARATS**
Color Grade **FANCY VIVID PINK**
Clarity Grade **VS 2**

March 3, 2026
IGI Report Number **LG778614220**
Description **LABORATORY GROWN DIAMOND**
Shape and Cutting Style **CUT CORNERED RECTANGULAR
MODIFIED BRILLIANT**
Measurements **11.43 X 7.49 X 5.12 MM**

GRADING RESULTS

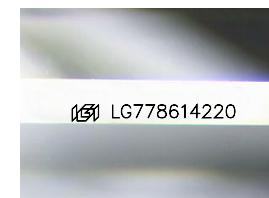
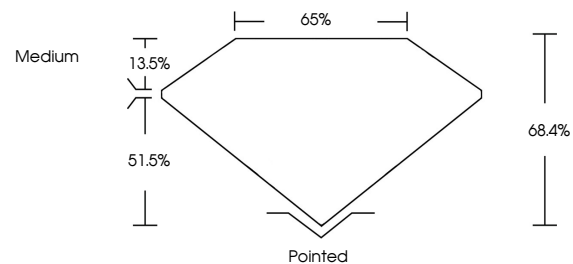
Carat Weight **3.69 CARATS**
Color Grade **FANCY VIVID PINK**
Clarity Grade **VS 2**

ADDITIONAL GRADING INFORMATION

Polish **EXCELLENT**
Symmetry **EXCELLENT**
Fluorescence **SLIGHT**
Inscription(s) **IGI LG778614220**

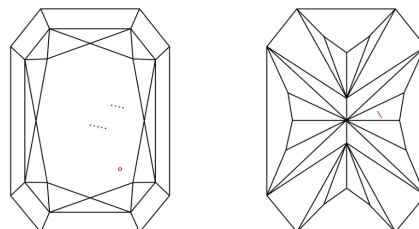
Comments: This Laboratory Grown Diamond was created by Chemical Vapor Deposition (CVD) growth process. Indications of post-growth treatment.

PROPORTIONS



Sample Image Used

CLARITY CHARACTERISTICS



KEY TO SYMBOLS

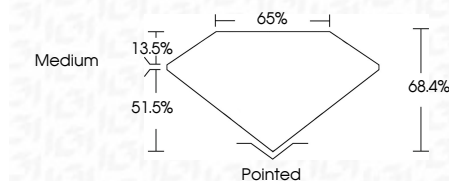
Red symbols indicate internal characteristics.
Green symbols indicate external characteristics.

COLOR

D E F G H I J Faint Very Light Light

CLARITY

FL	IF	VS ¹⁻²	VS ¹⁻²	SI ¹⁻²	I ¹⁻³
Flawless	Internally Flawless	Very Very Slightly Included	Very Slightly Included	Slightly Included	Included



ADDITIONAL GRADING INFORMATION

Polish **EXCELLENT**
Symmetry **EXCELLENT**
Fluorescence **SLIGHT**
Inscription(s) **IGI LG778614220**
Comments: This Laboratory Grown Diamond was created by Chemical Vapor Deposition (CVD) growth process. Indications of post-growth treatment.



March 3, 2026
IGI Report No LG778614220
CUT CORNERED RECT. MODIFIED BRILLIANT
11.43 X 7.49 X 5.12 MM
3.69 CARATS
FANCY VIVID PINK
VS 2
68.4%
65%
Medium
Pointed
EXCELLENT
EXCELLENT
SLIGHT
IGI LG778614220
Comments: This Laboratory Grown Diamond was created by Chemical Vapor Deposition (CVD) growth process. Indications of post-growth treatment.