



**ELECTRONIC COPY**

LG778608834  
Report verification at [igi.org](http://igi.org)



March 2, 2026  
IGI Report Number **LG778608834**  
Description **LABORATORY GROWN DIAMOND**  
Shape and Cutting Style **PEAR BRILLIANT**  
Measurements **11.30 X 7.11 X 4.41 MM**  
**GRADING RESULTS**  
Carat Weight **2.10 CARATS**  
Color Grade **E**  
Clarity Grade **VVS 2**

March 2, 2026  
IGI Report Number **LG778608834**  
Description **LABORATORY GROWN DIAMOND**  
Shape and Cutting Style **PEAR BRILLIANT**  
Measurements **11.30 X 7.11 X 4.41 MM**

**GRADING RESULTS**

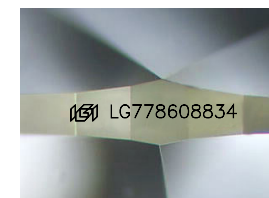
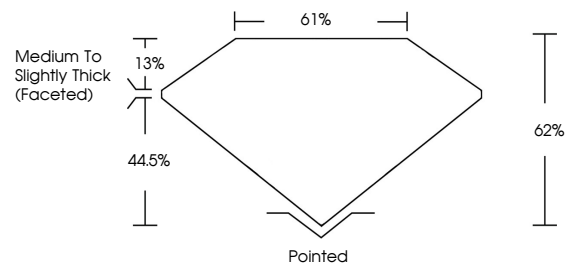
Carat Weight **2.10 CARATS**  
Color Grade **E**  
Clarity Grade **VVS 2**

**ADDITIONAL GRADING INFORMATION**

Polish **EXCELLENT**  
Symmetry **EXCELLENT**  
Fluorescence **NONE**  
Inscription(s) **LG778608834**

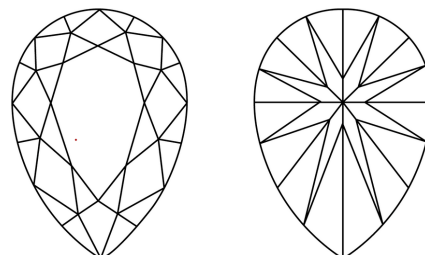
Comments: This Laboratory Grown Diamond was created by Chemical Vapor Deposition (CVD) growth process.  
Type IIa

**PROPORTIONS**



Sample Image Used

**CLARITY CHARACTERISTICS**



**KEY TO SYMBOLS**

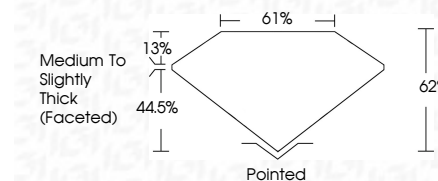
Red symbols indicate internal characteristics.  
Green symbols indicate external characteristics.

**COLOR**

D E F G H I J Faint Very Light Light

**CLARITY**

FL	IF	VS <sup>1-2</sup>	VS <sup>1-2</sup>	SI <sup>1-2</sup>	I <sup>1-3</sup>
Flawless	Internally Flawless	Very Very Slightly Included	Very Slightly Included	Slightly Included	Included



**ADDITIONAL GRADING INFORMATION**

Polish **EXCELLENT**  
Symmetry **EXCELLENT**  
Fluorescence **NONE**  
Inscription(s) **LG778608834**  
Comments: This Laboratory Grown Diamond was created by Chemical Vapor Deposition (CVD) growth process.  
Type IIa



March 2, 2026  
IGI Report No **LG778608834**  
**PEAR BRILLIANT**  
11.30 X 7.11 X 4.41 MM  
Carat Weight **2.10 CARATS**  
Color Grade **E**  
Clarity Grade **VVS 2**  
Depth **44.5%**  
Table **13%**  
Girdle **Medium to Slightly Thick (Faceted)**  
Culet **Pointed**  
Polish **EXCELLENT**  
Symmetry **EXCELLENT**  
Fluorescence **NONE**  
Inscription(s) **LG778608834**  
Comments: This Laboratory Grown Diamond was created by Chemical Vapor Deposition (CVD) growth process.  
Type IIa