



ELECTRONIC COPY

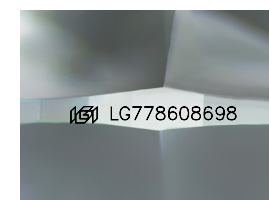
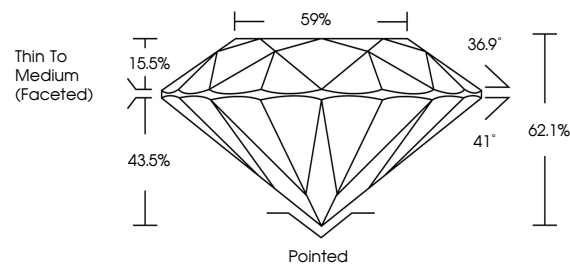
LG778608698
Report verification at igi.org



February 28, 2026
IGI Report Number **LG778608698**
Description **LABORATORY GROWN DIAMOND**
Shape and Cutting Style **ROUND BRILLIANT**
Measurements **8.44 - 8.49 X 5.26 MM**
GRADING RESULTS
Carat Weight **2.32 CARATS**
Color Grade **FANCY INTENSE PINK**
Clarity Grade **VVS 2**
Cut Grade **VERY GOOD**

February 28, 2026
IGI Report Number **LG778608698**
Description **LABORATORY GROWN DIAMOND**
Shape and Cutting Style **ROUND BRILLIANT**
Measurements **8.44 - 8.49 X 5.26 MM**

PROPORTIONS

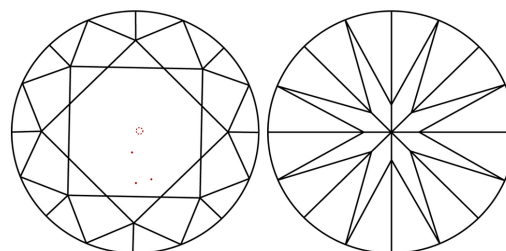


Sample Image Used

GRADING RESULTS

Carat Weight **2.32 CARATS**
Color Grade **FANCY INTENSE PINK**
Clarity Grade **VVS 2**
Cut Grade **VERY GOOD**

CLARITY CHARACTERISTICS



KEY TO SYMBOLS

Red symbols indicate internal characteristics.
Green symbols indicate external characteristics.

ADDITIONAL GRADING INFORMATION

Polish **EXCELLENT**
Symmetry **EXCELLENT**
Fluorescence **STRONG**
Inscription(s) **IGI LG778608698**

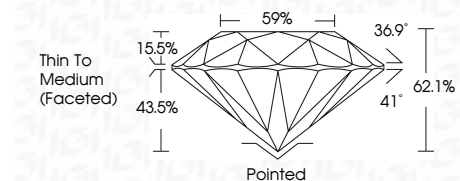
Comments: This Laboratory Grown Diamond was created by Chemical Vapor Deposition (CVD) growth process.
Indications of post-growth treatment.

COLOR

D E F G H I J Faint Very Light Light

CLARITY

| FL | IF | VVS ¹⁻² | VS ¹⁻² | SI ¹⁻² | I ¹⁻³ |
|----------|---------------------|-----------------------------|------------------------|-------------------|------------------|
| Flawless | Internally Flawless | Very Very Slightly Included | Very Slightly Included | Slightly Included | Included |



ADDITIONAL GRADING INFORMATION

Polish **EXCELLENT**
Symmetry **EXCELLENT**
Fluorescence **STRONG**
Inscription(s) **IGI LG778608698**
Comments: This Laboratory Grown Diamond was created by Chemical Vapor Deposition (CVD) growth process.
Indications of post-growth treatment.



IGI



February 28, 2026
IGI Report No **LG778608698**
ROUND BRILLIANT
8.44 - 8.49 X 5.26 MM
2.32 CARATS
FANCY INTENSE PINK
VVS 2
VERY GOOD
62.1%
59%
Thin To Medium (Faceted)
Pointed
EXCELLENT
EXCELLENT
STRONG
IGI LG778608698
Comments: This Laboratory Grown Diamond was created by Chemical Vapor Deposition (CVD) growth process.
Indications of post-growth treatment.