



**ELECTRONIC COPY**

LG778608695  
Report verification at igi.org



February 28, 2026

IGI Report Number **LG778608695**

Description **LABORATORY GROWN DIAMOND**

Shape and Cutting Style **EMERALD CUT**

Measurements **7.02 X 4.77 X 3.00 MM**

**GRADING RESULTS**

Carat Weight **1.03 CARAT**

Color Grade **FANCY INTENSE PINK**

Clarity Grade **VS 1**

February 28, 2026

IGI Report Number **LG778608695**

Description **LABORATORY GROWN DIAMOND**

Shape and Cutting Style **EMERALD CUT**

Measurements **7.02 X 4.77 X 3.00 MM**

**GRADING RESULTS**

Carat Weight **1.03 CARAT**

Color Grade **FANCY INTENSE PINK**

Clarity Grade **VS 1**

**ADDITIONAL GRADING INFORMATION**

Polish **EXCELLENT**

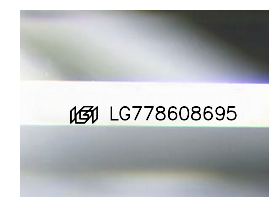
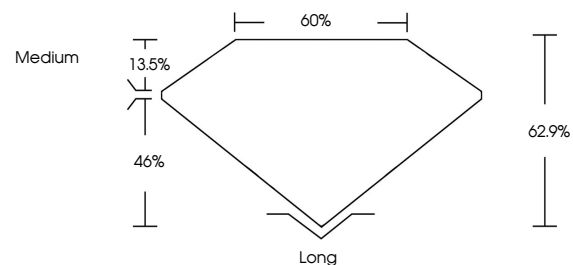
Symmetry **EXCELLENT**

Fluorescence **STRONG**

Inscription(s) **LG778608695**

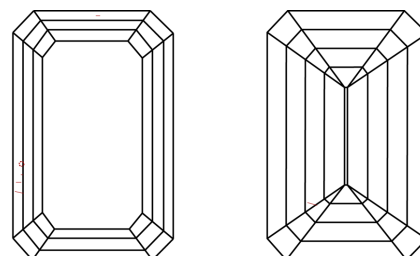
Comments: This Laboratory Grown Diamond was created by High Pressure High Temperature (HPHT) growth process. Indications of post-growth treatment.

**PROPORTIONS**



Sample Image Used

**CLARITY CHARACTERISTICS**



**KEY TO SYMBOLS**

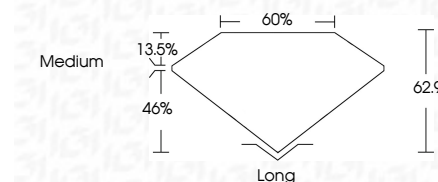
Red symbols indicate internal characteristics.  
Green symbols indicate external characteristics.

**COLOR**

D E F G H I J Faint Very Light Light

**CLARITY**

| FL       | IF                  | VS <sup>1-2</sup>           | VS <sup>1-2</sup>      | SI <sup>1-2</sup> | I <sup>1-3</sup> |
|----------|---------------------|-----------------------------|------------------------|-------------------|------------------|
| Flawless | Internally Flawless | Very Very Slightly Included | Very Slightly Included | Slightly Included | Included         |



**ADDITIONAL GRADING INFORMATION**

Polish **EXCELLENT**

Symmetry **EXCELLENT**

Fluorescence **STRONG**

Inscription(s) **LG778608695**

Comments: This Laboratory Grown Diamond was created by High Pressure High Temperature (HPHT) growth process. Indications of post-growth treatment.



February 28, 2026  
IGI Report No **LG778608695**  
**EMERALD CUT**

**1.03 CARAT**  
Carat Weight  
**FANCY INTENSE PINK**  
Color Grade

**VS 1**  
Clarity Grade  
**62.9%**  
Depth  
**60%**  
Table  
**Medium**  
Girdle

**Long**  
Culet  
**EXCELLENT**  
Polish  
**EXCELLENT**  
Symmetry  
**STRONG**  
Fluorescence  
Inscription(s)  
 **LG778608695**

Comments: This Laboratory Grown Diamond was created by High Pressure High Temperature (HPHT) growth process. Indications of post-growth treatment.