



ELECTRONIC COPY

LG778604559
Report verification at igi.org



February 27, 2026
IGI Report Number **LG778604559**
Description **LABORATORY GROWN DIAMOND**
Shape and Cutting Style **ROUND BRILLIANT**
Measurements **8.10 - 8.13 X 5.14 MM**

GRADING RESULTS

Carat Weight **2.10 CARATS**
Color Grade **FANCY INTENSE YELLOW**
Clarity Grade **VS 1**
Cut Grade **EXCELLENT**

February 27, 2026
IGI Report Number **LG778604559**
Description **LABORATORY GROWN DIAMOND**
Shape and Cutting Style **ROUND BRILLIANT**
Measurements **8.10 - 8.13 X 5.14 MM**

GRADING RESULTS

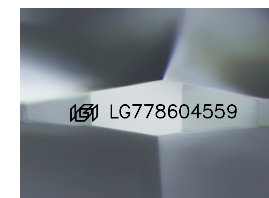
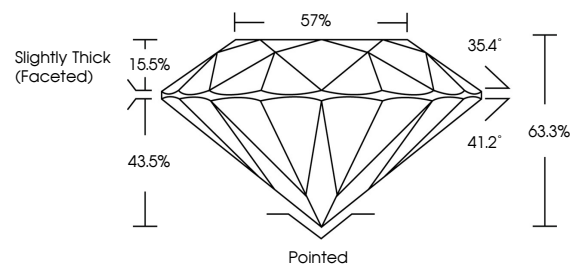
Carat Weight **2.10 CARATS**
Color Grade **FANCY INTENSE YELLOW**
Clarity Grade **VS 1**
Cut Grade **EXCELLENT**

ADDITIONAL GRADING INFORMATION

Polish **EXCELLENT**
Symmetry **EXCELLENT**
Fluorescence **VERY SLIGHT**
Inscription(s) **LG778604559**

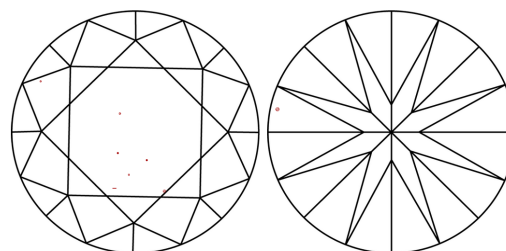
Comments: This Laboratory Grown Diamond was created by Chemical Vapor Deposition (CVD) growth process.
Indications of post-growth treatment.

PROPORTIONS



Sample Image Used

CLARITY CHARACTERISTICS



KEY TO SYMBOLS

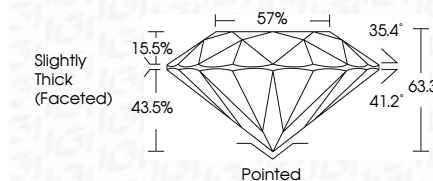
Red symbols indicate internal characteristics.
Green symbols indicate external characteristics.

COLOR

D E F G H I J Faint Very Light Light

CLARITY

FL	IF	VS ¹⁻²	VS ¹⁻²	SI ¹⁻²	I ¹⁻³
Flawless	Internally Flawless	Very Very Slightly Included	Very Slightly Included	Slightly Included	Included



ADDITIONAL GRADING INFORMATION

Polish **EXCELLENT**
Symmetry **EXCELLENT**
Fluorescence **VERY SLIGHT**
Inscription(s) **LG778604559**
Comments: This Laboratory Grown Diamond was created by Chemical Vapor Deposition (CVD) growth process.
Indications of post-growth treatment.



February 27, 2026
IGI Report No **LG778604559**
ROUND BRILLIANT
2.10 CARATS
Carat Weight **FANCY INTENSE YELLOW**
Color Grade **VS 1**
Clarity Grade **EXCELLENT**
Depth **63.3%**
Table **57%**
Girdle **Slightly Thick (Faceted)**
Culet **Pointed**
Polish **EXCELLENT**
Symmetry **EXCELLENT**
Fluorescence **VERY SLIGHT**
Inscription(s) **LG778604559**
Comments: This Laboratory Grown Diamond was created by Chemical Vapor Deposition (CVD) growth process.
Indications of post-growth treatment.