



LABORATORY GROWN DIAMOND REPORT

February 27, 2026
 IGI Report Number **LG777628928**
 Description **LABORATORY GROWN DIAMOND**
 Shape and Cutting Style **ROUND BRILLIANT**
 Measurements **4.16 - 4.18 X 2.51 MM**

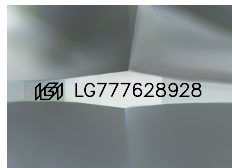
GRADING RESULTS

Carat Weight **0.26 CARAT**
 Color Grade **FANCY VIVID PINK**
 Clarity Grade **VS 1**
 Cut Grade **IDEAL**

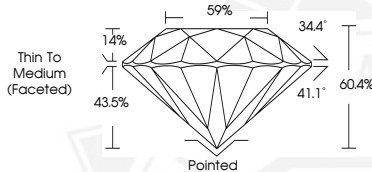
ADDITIONAL GRADING INFORMATION

Polish **VERY GOOD**
 Symmetry **VERY GOOD**
 Fluorescence **STRONG**
 Inscription(s) **IGI LG777628928**

Comments: This Laboratory Grown Diamond was created by Chemical Vapor Deposition (CVD) growth process. Indications of post-growth treatment.



Sample Image Used



February 27, 2026
 IGI Report Number **LG777628928**
 ROUND BRILLIANT
 LABORATORY GROWN DIAMOND
 4.16 - 4.18 X 2.51 MM
 Carat Weight **0.26 CARAT**
 Color Grade **FANCY VIVID PINK**
 Clarity Grade **VS 1**
 Cut Grade **IDEAL**
 Polish **VERY GOOD**
 Symmetry **VERY GOOD**
 Fluorescence **STRONG**
 Inscription(s) **IGI LG777628928**

Comments: This Laboratory Grown Diamond was created by Chemical Vapor Deposition (CVD) growth process. Indications of post-growth treatment.



February 27, 2026
 IGI Report Number **LG777628928**
 ROUND BRILLIANT
 LABORATORY GROWN DIAMOND
 4.16 - 4.18 X 2.51 MM
 Carat Weight **0.26 CARAT**
 Color Grade **FANCY VIVID PINK**
 Clarity Grade **VS 1**
 Cut Grade **IDEAL**
 Polish **VERY GOOD**
 Symmetry **VERY GOOD**
 Fluorescence **STRONG**
 Inscription(s) **IGI LG777628928**

Comments: This Laboratory Grown Diamond was created by Chemical Vapor Deposition (CVD) growth process. Indications of post-growth treatment.



THIS DOCUMENT WAS PRODUCED WITH THE FOLLOWING SECURITY MEASURES: SPECIAL DOCUMENT PAPER, INK SCREENS, WATERMARK, BACKGROUND DESIGNS, HOLOGRAM AND OTHER SECURITY FEATURES NOT LISTED AND DO EXCEED DOCUMENT SECURITY INDUSTRY GUIDELINES.