



ELECTRONIC COPY

LG777628385
Report verification at igi.org



March 3, 2026
IGI Report Number LG777628385
Description LABORATORY GROWN DIAMOND
Shape and Cutting Style CUT CORNERED RECTANGULAR MODIFIED BRILLIANT
Measurements 11.29 X 7.76 X 5.31 MM
GRADING RESULTS
Carat Weight 4.08 CARATS
Color Grade E
Clarity Grade VVS 2

LABORATORY GROWN DIAMOND REPORT

March 3, 2026
IGI Report Number LG777628385
Description LABORATORY GROWN DIAMOND
Shape and Cutting Style CUT CORNERED RECTANGULAR MODIFIED BRILLIANT
Measurements 11.29 X 7.76 X 5.31 MM

GRADING RESULTS

Carat Weight 4.08 CARATS
Color Grade E
Clarity Grade VVS 2

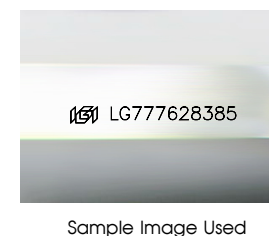
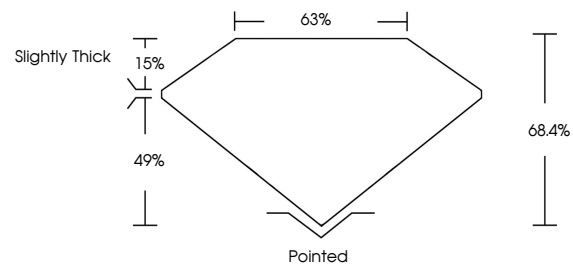
ADDITIONAL GRADING INFORMATION

Polish EXCELLENT
Symmetry EXCELLENT
Fluorescence NONE

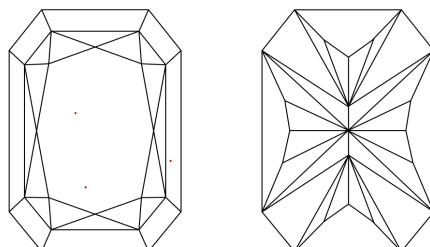
Inscription(s) IGI LG777628385

Comments: This Laboratory Grown Diamond was created by Chemical Vapor Deposition (CVD) growth process. Type IIa

PROPORTIONS



CLARITY CHARACTERISTICS



KEY TO SYMBOLS

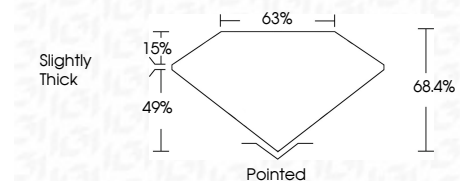
Red symbols indicate internal characteristics.
Green symbols indicate external characteristics.

COLOR

D E F G H I J Faint Very Light Light

CLARITY

FL IF VVS 1-2 VS 1-2 SI 1-2 I 1-3
Flawless Internally Flawless Very Very Slightly Included Very Slightly Included Slightly Included Included



ADDITIONAL GRADING INFORMATION

Polish EXCELLENT
Symmetry EXCELLENT
Fluorescence NONE
Inscription(s) IGI LG777628385
Comments: This Laboratory Grown Diamond was created by Chemical Vapor Deposition (CVD) growth process. Type IIa



March 3, 2026
IGI Report No LG777628385
CUT CORNERED RECT. MODIFIED BRILLIANT
11.29 X 7.76 X 5.31 MM
4.08 CARATS
E
VVS 2
68.4%
63%
Slightly Thick
Pointed
EXCELLENT
EXCELLENT
NONE
IGI LG777628385
Comments: This Laboratory Grown Diamond was created by Chemical Vapor Deposition (CVD) growth process. Type IIa