



Light Performance Grade: Exceptional



February 25, 2026 IGI Report Number LG777628192 Description LABORATORY GROWN DIAMOND Shape and Cutting Style ROUND BRILLIANT Measurements 7.36 - 7.41 X 4.55 MM GRADING RESULTS Carat Weight 1.52 CARAT Color Grade D Clarity Grade VS 1 Cut Grade IDEAL

ELECTRONIC COPY LABORATORY GROWN DIAMOND REPORT

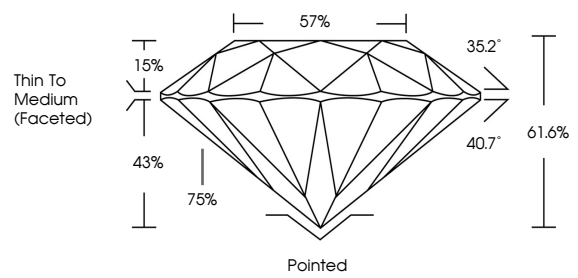
February 25, 2026 IGI Report Number LG777628192 Description LABORATORY GROWN DIAMOND Shape and Cutting Style ROUND BRILLIANT Measurements 7.36 - 7.41 x 4.55 mm

GRADING RESULTS Carat Weight 1.52 CARAT Color Grade D Clarity Grade VS 1 Cut Grade IDEAL

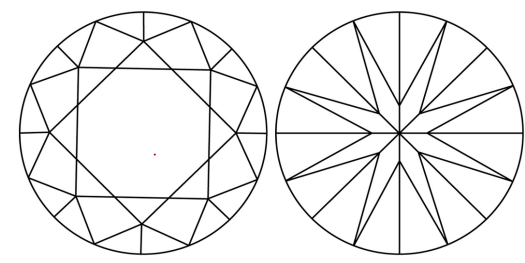
ADDITIONAL GRADING INFORMATION Polish EXCELLENT Symmetry EXCELLENT Fluorescence NONE Inscription(s) IGI LG777628192

Comments: This Laboratory Grown Diamond was created by Chemical Vapor Deposition (CVD) growth process. Type IIa

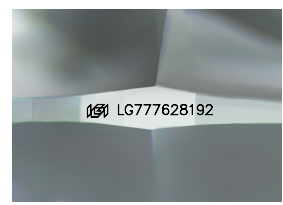
PROPORTIONS



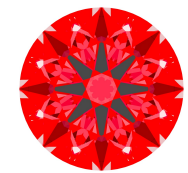
CLARITY CHARACTERISTICS



KEY TO SYMBOLS Red symbols indicate internal characteristics. Green symbols indicate external characteristics.



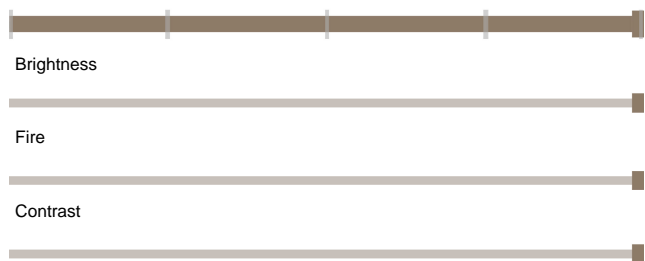
Sample Image Used



Structured Light Environment Representation

Moderate High Superior Exceptional

Light Performance

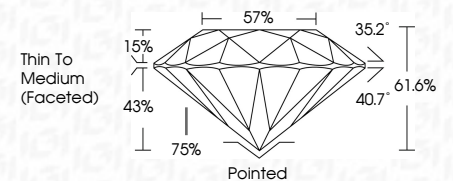


COLOR

D E F G H I J Faint Very Light Light

CLARITY

Table with columns: FL, IF, VS 1-2, VS 1-2, SI 1-2, I 1-3 and rows: Flawless, Internally Flawless, Very Very Slightly Included, Very Slightly Included, Slightly Included, Included



ADDITIONAL GRADING INFORMATION Polish EXCELLENT Symmetry EXCELLENT Fluorescence NONE Inscription(s) IGI LG777628192 Comments: This Laboratory Grown Diamond was created by Chemical Vapor Deposition (CVD) growth process. Type IIa



Summary table with columns: February 25, 2026, IGI Report No LG777628192, ROUND BRILLIANT, 7.36 - 7.41 X 4.55 MM, 1.52 CARAT, D, VS 1, IDEAL, 61.6%, 57%, Thin To Medium (Faceted), Pointed, EXCELLENT, EXCELLENT, NONE, IGI LG777628192

