



**ELECTRONIC COPY**

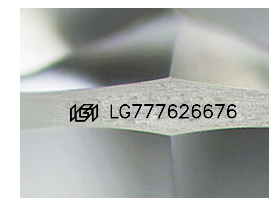
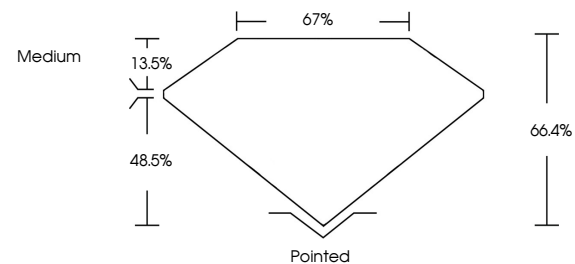
LG777626676  
Report verification at igi.org



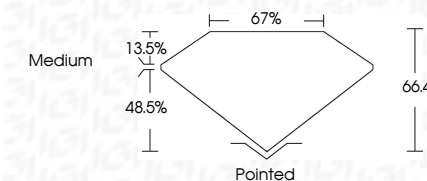
February 23, 2026  
IGI Report Number **LG777626676**  
Description **LABORATORY GROWN DIAMOND**  
Shape and Cutting Style **HEXAGONAL MODIFIED  
BRILLIANT**  
Measurements **13.71 X 7.40 X 4.91 MM**  
**GRADING RESULTS**  
Carat Weight **3.07 CARATS**  
Color Grade **E**  
Clarity Grade **VVS 2**

February 23, 2026  
IGI Report Number **LG777626676**  
Description **LABORATORY GROWN DIAMOND**  
Shape and Cutting Style **HEXAGONAL MODIFIED  
BRILLIANT**  
Measurements **13.71 X 7.40 X 4.91 MM**

**PROPORTIONS**



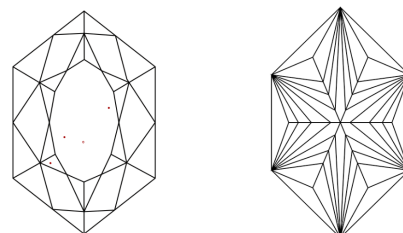
Sample Image Used



**GRADING RESULTS**

Carat Weight **3.07 CARATS**  
Color Grade **E**  
Clarity Grade **VVS 2**

**CLARITY CHARACTERISTICS**



**KEY TO SYMBOLS**

Red symbols indicate internal characteristics.  
Green symbols indicate external characteristics.

**COLOR**

D E F G H I J Faint Very Light Light

**CLARITY**

FL	IF	VVS <sup>1-2</sup>	VS <sup>1-2</sup>	SI <sup>1-2</sup>	I <sup>1-3</sup>
Flawless	Internally Flawless	Very Very Slightly Included	Very Slightly Included	Slightly Included	Included

**ADDITIONAL GRADING INFORMATION**

Polish **EXCELLENT**  
Symmetry **EXCELLENT**  
Fluorescence **NONE**  
Inscription(s) **IGI LG777626676**  
Comments: This Laboratory Grown Diamond was created by Chemical Vapor Deposition (CVD) growth process. Type IIa

**ADDITIONAL GRADING INFORMATION**

Polish **EXCELLENT**  
Symmetry **EXCELLENT**  
Fluorescence **NONE**  
Inscription(s) **IGI LG777626676**

Comments: This Laboratory Grown Diamond was created by Chemical Vapor Deposition (CVD) growth process. Type IIa



February 23, 2026  
IGI Report No **LG777626676**  
**HEXAGONAL MODIFIED BRILLIANT**  
3.07 CARATS **E**  
Carat Weight **3.07**  
Color Grade **E**  
Clarity Grade **VVS 2**  
Depth **48.5%**  
Table **66.4%**  
Girdle **Medium**  
Culet **Pointed**  
Polish **EXCELLENT**  
Symmetry **EXCELLENT**  
Fluorescence **NONE**  
Inscription(s) **IGI LG777626676**

Comments: This Laboratory Grown Diamond was created by Chemical Vapor Deposition (CVD) growth process. Type IIa