



**ELECTRONIC COPY**

LG777626664  
Report verification at igi.org



February 23, 2026  
IGI Report Number **LG777626664**  
Description **LABORATORY GROWN DIAMOND**  
Shape and Cutting Style **HEXAGONAL MODIFIED BRILLIANT**  
Measurements **15.11 X 8.11 X 5.42 MM**  
**GRADING RESULTS**  
Carat Weight **3.98 CARATS**  
Color Grade **D**  
Clarity Grade **VVS 2**

February 23, 2026  
IGI Report Number **LG777626664**  
Description **LABORATORY GROWN DIAMOND**  
Shape and Cutting Style **HEXAGONAL MODIFIED BRILLIANT**  
Measurements **15.11 X 8.11 X 5.42 MM**

**GRADING RESULTS**

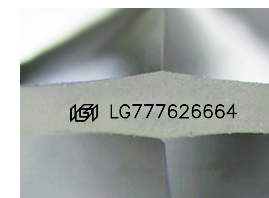
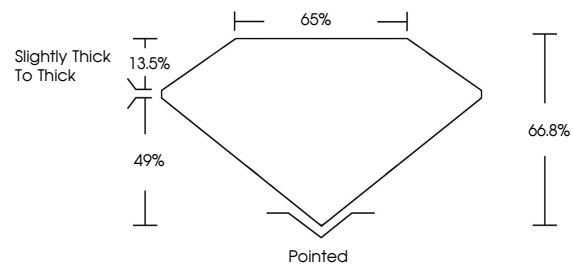
Carat Weight **3.98 CARATS**  
Color Grade **D**  
Clarity Grade **VVS 2**

**ADDITIONAL GRADING INFORMATION**

Polish **EXCELLENT**  
Symmetry **EXCELLENT**  
Fluorescence **NONE**  
Inscription(s) **IGI LG777626664**

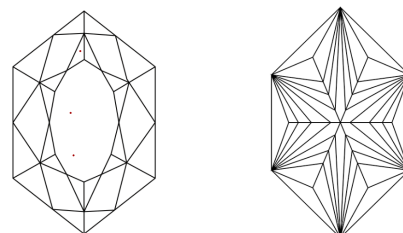
Comments: This Laboratory Grown Diamond was created by Chemical Vapor Deposition (CVD) growth process.  
Type IIa

**PROPORTIONS**



Sample Image Used

**CLARITY CHARACTERISTICS**



**KEY TO SYMBOLS**

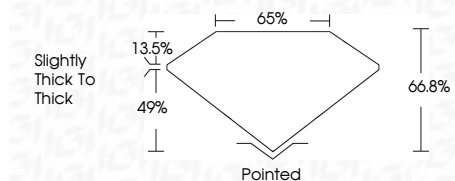
Red symbols indicate internal characteristics.  
Green symbols indicate external characteristics.

**COLOR**

D E F G H I J Faint Very Light Light

**CLARITY**

FL	IF	VVS <sup>1-2</sup>	VS <sup>1-2</sup>	SI <sup>1-2</sup>	I <sup>1-3</sup>
Flawless	Internally Flawless	Very Very Slightly Included	Very Slightly Included	Slightly Included	Included



**ADDITIONAL GRADING INFORMATION**

Polish **EXCELLENT**  
Symmetry **EXCELLENT**  
Fluorescence **NONE**  
Inscription(s) **IGI LG777626664**  
Comments: This Laboratory Grown Diamond was created by Chemical Vapor Deposition (CVD) growth process.  
Type IIa



February 23, 2026  
IGI Report No LG777626664  
**HEXAGONAL MODIFIED BRILLIANT**  
3.98 CARATS  
D  
3.98 CARATS  
D  
VVS 2  
66.8%  
49%  
13.5%  
Slightly Thick To Thick  
Pointed  
EXCELLENT  
EXCELLENT  
NONE  
IGI LG777626664  
Comments: This Laboratory Grown Diamond was created by Chemical Vapor Deposition (CVD) growth process.  
Type IIa