



**ELECTRONIC COPY**

LG777626659  
Report verification at igi.org



February 23, 2026  
IGI Report Number **LG777626659**  
Description **LABORATORY GROWN DIAMOND**  
Shape and Cutting Style **HEXAGONAL MODIFIED BRILLIANT**  
Measurements **15.18 X 8.10 X 5.30 MM**  
**GRADING RESULTS**  
Carat Weight **3.99 CARATS**  
Color Grade **E**  
Clarity Grade **VVS 2**

February 23, 2026  
IGI Report Number **LG777626659**  
Description **LABORATORY GROWN DIAMOND**  
Shape and Cutting Style **HEXAGONAL MODIFIED BRILLIANT**  
Measurements **15.18 X 8.10 X 5.30 MM**

**GRADING RESULTS**

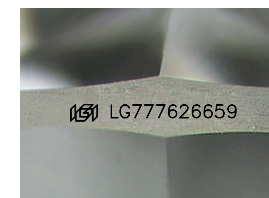
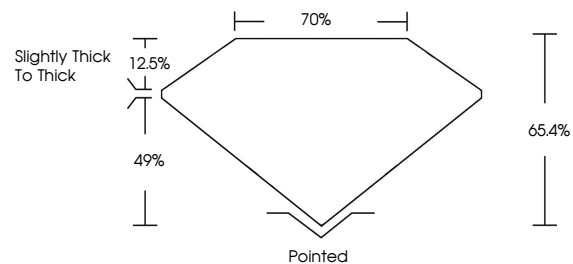
Carat Weight **3.99 CARATS**  
Color Grade **E**  
Clarity Grade **VVS 2**

**ADDITIONAL GRADING INFORMATION**

Polish **EXCELLENT**  
Symmetry **EXCELLENT**  
Fluorescence **NONE**  
Inscription(s) **IGI LG777626659**

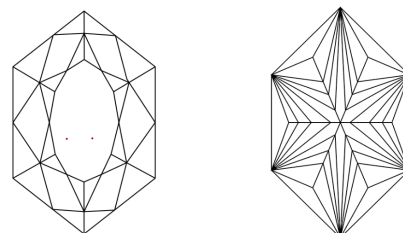
Comments: This Laboratory Grown Diamond was created by Chemical Vapor Deposition (CVD) growth process.  
Type IIa

**PROPORTIONS**



Sample Image Used

**CLARITY CHARACTERISTICS**



**KEY TO SYMBOLS**

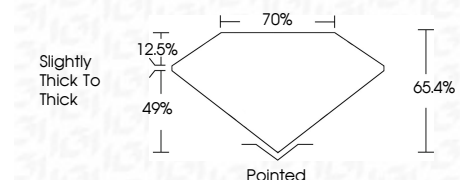
Red symbols indicate internal characteristics.  
Green symbols indicate external characteristics.

**COLOR**

D E F G H I J Faint Very Light Light

**CLARITY**

FL	IF	VVS <sup>1-2</sup>	VS <sup>1-2</sup>	SI <sup>1-2</sup>	I <sup>1-3</sup>
Flawless	Internally Flawless	Very Very Slightly Included	Very Slightly Included	Slightly Included	Included



**ADDITIONAL GRADING INFORMATION**

Polish **EXCELLENT**  
Symmetry **EXCELLENT**  
Fluorescence **NONE**  
Inscription(s) **IGI LG777626659**  
Comments: This Laboratory Grown Diamond was created by Chemical Vapor Deposition (CVD) growth process.  
Type IIa



February 23, 2026  
IGI Report No **LG777626659**  
**HEXAGONAL MODIFIED BRILLIANT**  
**3.99 CARATS**  
**E**  
Carat Weight  
Color Grade  
Clarity Grade **VVS 2**  
Depth **65.4%**  
Table **70%**  
Girdle **Slightly thick to thick**  
Culet **Pointed**  
Polish **EXCELLENT**  
Symmetry **EXCELLENT**  
Fluorescence **NONE**  
Inscription(s) **IGI LG777626659**

Comments: This Laboratory Grown Diamond was created by Chemical Vapor Deposition (CVD) growth process.  
Type IIa