



ELECTRONIC COPY

LABORATORY GROWN DIAMOND REPORT

February 25, 2026
IGI Report Number **LG777626520**

Description **LABORATORY GROWN DIAMOND**

Shape and Cutting Style **HEXAGONAL MODIFIED STEP CUT**

Measurements **9.61 X 4.77 X 2.80 MM**

GRADING RESULTS

Carat Weight **1.08 CARAT**

Color Grade **D**

Clarity Grade **VVS 2**

ADDITIONAL GRADING INFORMATION

Polish **EXCELLENT**

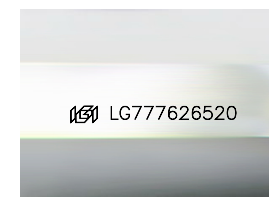
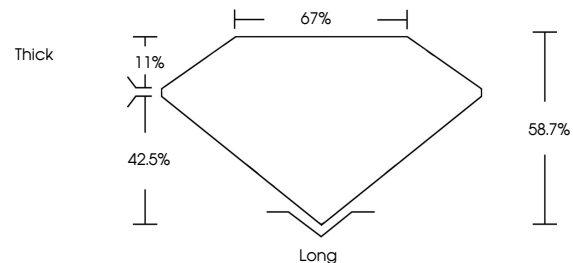
Symmetry **EXCELLENT**

Fluorescence **NONE**

Inscription(s) **IGI LG777626520**

Comments: This Laboratory Grown Diamond was created by Chemical Vapor Deposition (CVD) growth process.
Type IIa

PROPORTIONS



Sample Image Used

COLOR

D E F G H I J Faint Very Light Light

CLARITY

FL	IF	VVS ¹⁻²	VS ¹⁻²	SI ¹⁻²	I ¹⁻³
Flawless	Internally Flawless	Very Very Slightly Included	Very Slightly Included	Slightly Included	Included



February 25, 2026

IGI Report Number **LG777626520**

Description **LABORATORY GROWN DIAMOND**

Shape and Cutting Style **HEXAGONAL MODIFIED STEP CUT**

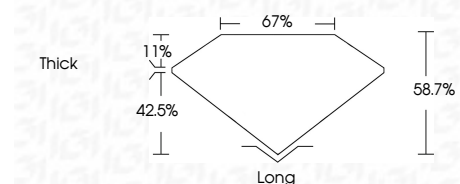
Measurements **9.61 X 4.77 X 2.80 MM**

GRADING RESULTS

Carat Weight **1.08 CARAT**

Color Grade **D**

Clarity Grade **VVS 2**



ADDITIONAL GRADING INFORMATION

Polish **EXCELLENT**

Symmetry **EXCELLENT**

Fluorescence **NONE**

Inscription(s) **IGI LG777626520**

Comments: This Laboratory Grown Diamond was created by Chemical Vapor Deposition (CVD) growth process.
Type IIa



IGI



February 25, 2026
IGI Report No LG777626520
HEXAGONAL MODIFIED STEP CUT

1.08 CARAT
D
VVS 2
58.7%
67%
Thick
Long
EXCELLENT
EXCELLENT
NONE
IGI LG777626520

Comments: This Laboratory Grown Diamond was created by Chemical Vapor Deposition (CVD) growth process.
Type IIa