



February 24, 2026

IGI Report Number **LG777625544**

**OVAL BRILLIANT  
LABORATORY GROWN DIAMOND  
7.26 X 5.10 X 3.23 MM**

Carat Weight	<b>0.76 CARAT</b>
Color Grade	<b>D</b>
Clarity Grade	<b>VS 2</b>
Polish	<b>VERY GOOD</b>
Symmetry	<b>VERY GOOD</b>
Fluorescence	<b>NONE</b>
Inscription(s)	<b>IGI LG777625544</b>

Comments: This Laboratory Grown Diamond was created by Chemical Vapor Deposition (CVD) growth process. Type IIa

**LABORATORY GROWN DIAMOND REPORT**

February 24, 2026

IGI Report Number

**LG777625544**

Description

**LABORATORY GROWN DIAMOND**

Shape and Cutting Style

**OVAL BRILLIANT**

Measurements

**7.26 X 5.10 X 3.23 MM**

**GRADING RESULTS**

Carat Weight

**0.76 CARAT**

Color Grade

**D**

Clarity Grade

**VS 2**

**ADDITIONAL GRADING INFORMATION**

Polish

**VERY GOOD**

Symmetry

**VERY GOOD**

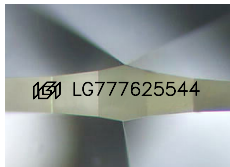
Fluorescence

**NONE**

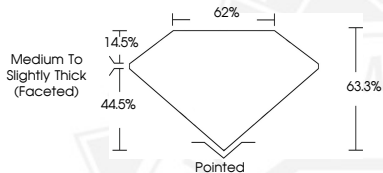
Inscription(s)

**IGI LG777625544**

Comments: This Laboratory Grown Diamond was created by Chemical Vapor Deposition (CVD) growth process. Type IIa



Sample Image Used



February 24, 2026

IGI Report Number **LG777625544**

**OVAL BRILLIANT  
LABORATORY GROWN DIAMOND  
7.26 X 5.10 X 3.23 MM**

Carat Weight	<b>0.76 CARAT</b>
Color Grade	<b>D</b>
Clarity Grade	<b>VS 2</b>
Polish	<b>VERY GOOD</b>
Symmetry	<b>VERY GOOD</b>
Fluorescence	<b>NONE</b>
Inscription(s)	<b>IGI LG777625544</b>

Comments: This Laboratory Grown Diamond was created by Chemical Vapor Deposition (CVD) growth process. Type IIa



THIS DOCUMENT WAS PRODUCED WITH THE FOLLOWING SECURITY MEASURES: SPECIAL DOCUMENT PAPER, INK SCREENS, WATERMARK, BACKGROUND DESIGNS, HOLOGRAM AND OTHER SECURITY FEATURES NOT LISTED AND DO EXCEED DOCUMENT SECURITY INDUSTRY GUIDELINES.