



ELECTRONIC COPY

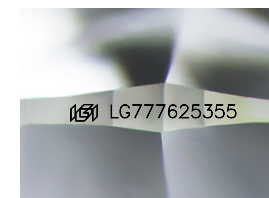
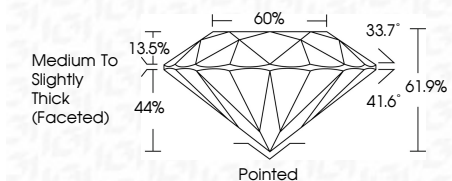
LG777625355
Report verification at igi.org



February 27, 2026
IGI Report Number LG777625355
Description LABORATORY GROWN DIAMOND
Shape and Cutting Style ROUND BRILLIANT
Measurements 8.17 - 8.20 X 5.07 MM

GRADING RESULTS

Carat Weight 2.10 CARATS
Color Grade D
Clarity Grade VS 1
Cut Grade IDEAL



Sample Image Used

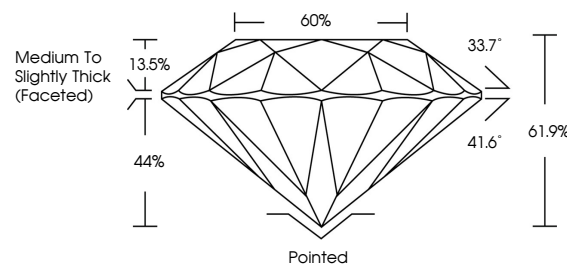
ADDITIONAL GRADING INFORMATION

Polish EXCELLENT
Symmetry EXCELLENT
Fluorescence NONE
Inscription(s) (IGI) LG777625355
Comments: This Laboratory Grown Diamond was created by Chemical Vapor Deposition (CVD) growth process. Type IIa

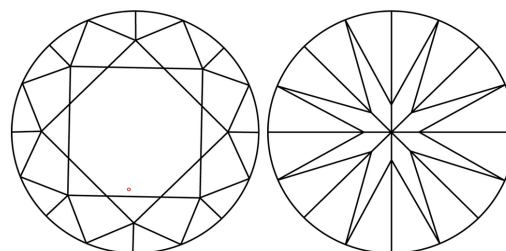


IGI

PROPORTIONS



CLARITY CHARACTERISTICS



KEY TO SYMBOLS

Red symbols indicate internal characteristics.
Green symbols indicate external characteristics.

COLOR

D E F G H I J Faint Very Light Light

CLARITY

FL IF VS 1-2 VS 2-3 SI 1-2 I 1-3
Flawless Internally Flawless Very Very Slightly Included Very Slightly Included Slightly Included Included

Summary of report details including date, report number, description, measurements, grading results, and additional information.