



ELECTRONIC COPY

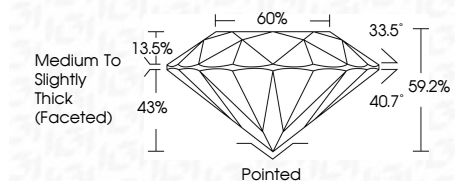
LG777617970
Report verification at igi.org



March 2, 2026
IGI Report Number LG777617970
Description LABORATORY GROWN DIAMOND
Shape and Cutting Style ROUND BRILLIANT
Measurements 7.52 - 7.56 X 4.46 MM

GRADING RESULTS

Carat Weight 1.54 CARAT
Color Grade D
Clarity Grade VS 2
Cut Grade IDEAL

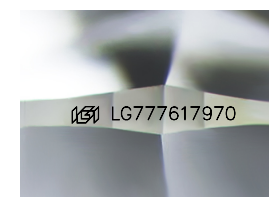


ADDITIONAL GRADING INFORMATION

Polish EXCELLENT
Symmetry EXCELLENT
Fluorescence NONE
Inscription(s) IGI LG777617970
Comments: This Laboratory Grown Diamond was created by Chemical Vapor Deposition (CVD) growth process. Type IIa

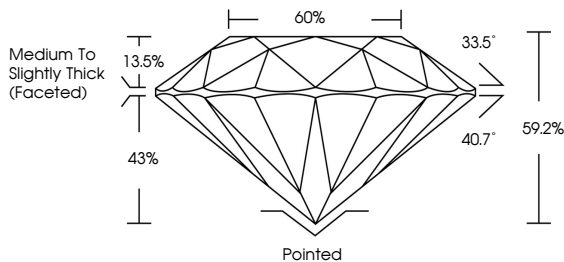


March 2, 2026
IGI Report No LG777617970
ROUND BRILLIANT
1.54 CARAT
D
VS 2
IDEAL
60%
Medium To Slightly Thick (Faceted)
Pointed
EXCELLENT
EXCELLENT
NONE
IGI LG777617970
Comments: This Laboratory Grown Diamond was created by Chemical Vapor Deposition (CVD) growth process. Type IIa

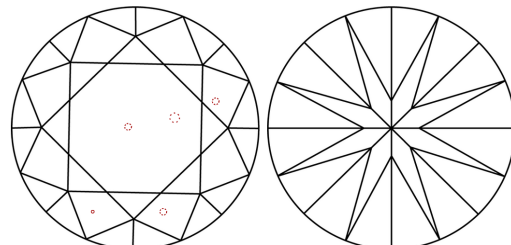


Sample Image Used

PROPORTIONS



CLARITY CHARACTERISTICS



KEY TO SYMBOLS

Red symbols indicate internal characteristics.
Green symbols indicate external characteristics.

COLOR

Color scale table with categories D, E, F, G, H, I, J, Faint, Very Light, Light

CLARITY

Clarity scale table with categories FL, IF, VS 1-2, VS 1-2, SI 1-2, I 1-3, Flawless, Internally Flawless, Very Very Slightly Included, Very Slightly Included, Slightly Included, Included

