



ELECTRONIC COPY

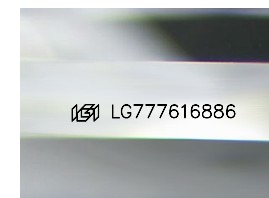
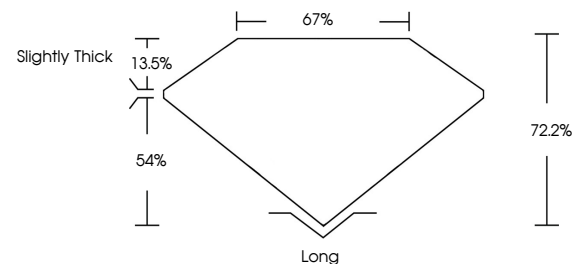
LG777616886
Report verification at igi.org



February 26, 2026
IGI Report Number **LG777616886**
Description **LABORATORY GROWN DIAMOND**
Shape and Cutting Style **EMERALD CUT**
Measurements **11.44 X 7.71 X 5.57 MM**
GRADING RESULTS
Carat Weight **5.05 CARATS**
Color Grade **D**
Clarity Grade **VVS 1**

February 26, 2026
IGI Report Number **LG777616886**
Description **LABORATORY GROWN DIAMOND**
Shape and Cutting Style **EMERALD CUT**
Measurements **11.44 X 7.71 X 5.57 MM**

PROPORTIONS

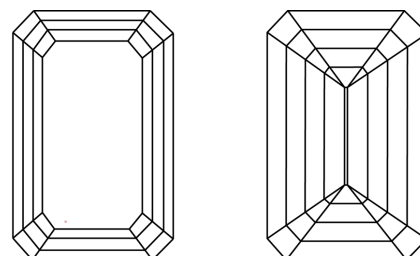


Sample Image Used

GRADING RESULTS

Carat Weight **5.05 CARATS**
Color Grade **D**
Clarity Grade **VVS 1**

CLARITY CHARACTERISTICS



KEY TO SYMBOLS

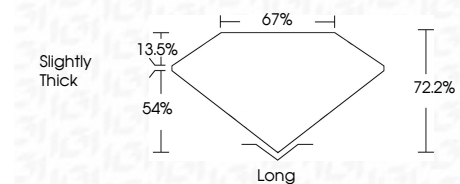
Red symbols indicate internal characteristics.
Green symbols indicate external characteristics.

COLOR

D E F G H I J Faint Very Light Light

CLARITY

FL	IF	VVS ¹⁻²	VS ¹⁻²	SI ¹⁻²	I ¹⁻³
Flawless	Internally Flawless	Very Very Slightly Included	Very Slightly Included	Slightly Included	Included



ADDITIONAL GRADING INFORMATION

Polish **EXCELLENT**
Symmetry **EXCELLENT**
Fluorescence **NONE**
Inscription(s) **IGI LG777616886**
Comments: This Laboratory Grown Diamond was created by Chemical Vapor Deposition (CVD) growth process. Type IIa

ADDITIONAL GRADING INFORMATION

Polish **EXCELLENT**
Symmetry **EXCELLENT**
Fluorescence **NONE**
Inscription(s) **IGI LG777616886**

Comments: This Laboratory Grown Diamond was created by Chemical Vapor Deposition (CVD) growth process. Type IIa



February 26, 2026
IGI Report No LG777616886
EMERALD CUT
11.44 X 7.71 X 5.57 MM
5.05 CARATS
D
VVS 1
72.2%
67%
Slightly Thick
Long
EXCELLENT
EXCELLENT
NONE
IGI LG777616886
Comments: This Laboratory Grown Diamond was created by Chemical Vapor Deposition (CVD) growth process. Type IIa