



ELECTRONIC COPY

LABORATORY GROWN DIAMOND REPORT

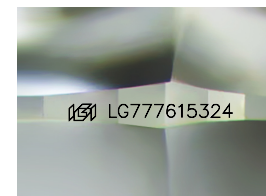
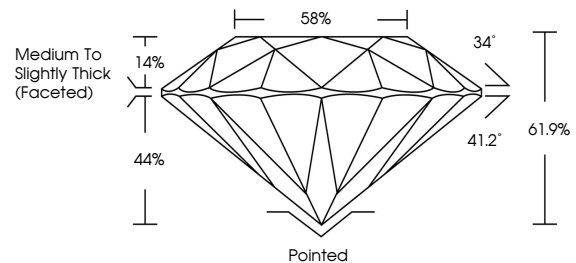
February 27, 2026
 IGI Report Number **LG777615324**
 Description **LABORATORY GROWN DIAMOND**
 Shape and Cutting Style **ROUND BRILLIANT**
 Measurements **6.47 - 6.51 X 4.02 MM**
GRADING RESULTS
 Carat Weight **1.03 CARAT**
 Color Grade **E**
 Clarity Grade **VS 2**
 Cut Grade **IDEAL**

ADDITIONAL GRADING INFORMATION

Polish **EXCELLENT**
 Symmetry **EXCELLENT**
 Fluorescence **NONE**
 Inscription(s) **IGI LG777615324**

Comments: This Laboratory Grown Diamond was created by Chemical Vapor Deposition (CVD) growth process. Type IIa

PROPORTIONS



Sample Image Used

COLOR

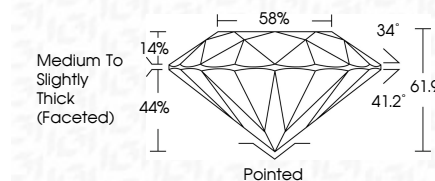
D E F G H I J Faint Very Light Light

CLARITY

FL	IF	VS ¹⁻²	VS ¹⁻²	SI ¹⁻²	I ¹⁻³
Flawless	Internally Flawless	Very Very Slightly Included	Very Slightly Included	Slightly Included	Included



February 27, 2026
 IGI Report Number **LG777615324**
 Description **LABORATORY GROWN DIAMOND**
 Shape and Cutting Style **ROUND BRILLIANT**
 Measurements **6.47 - 6.51 X 4.02 MM**
GRADING RESULTS
 Carat Weight **1.03 CARAT**
 Color Grade **E**
 Clarity Grade **VS 2**
 Cut Grade **IDEAL**



ADDITIONAL GRADING INFORMATION

Polish **EXCELLENT**
 Symmetry **EXCELLENT**
 Fluorescence **NONE**
 Inscription(s) **IGI LG777615324**
 Comments: This Laboratory Grown Diamond was created by Chemical Vapor Deposition (CVD) growth process. Type IIa



IGI

February 27, 2026
 IGI Report No LG777615324
ROUND BRILLIANT
 6.47 - 6.51 X 4.02 MM
 Carat Weight **1.03 CARAT**
 Color Grade **E**
 Clarity Grade **VS 2**
 Depth **IDEAL**
 Table **61.9%**
 Pavilion Angle **41.2°**
 Crown Angle **34°**
 Total Depth **61.9%**
 Medium To Slightly Thick (Faceted)
 Pointed
 Polish **EXCELLENT**
 Symmetry **EXCELLENT**
 Fluorescence **NONE**
 Inscription(s) **IGI LG777615324**
 Comments: This Laboratory Grown Diamond was created by Chemical Vapor Deposition (CVD) growth process. Type IIa