



ELECTRONIC COPY

LG777613682
Report verification at igi.org



June 12, 2026
IGI Report Number LG777613682
Description LABORATORY GROWN DIAMOND
Shape and Cutting Style OLD EUROPEAN CUT
Measurements 7.94 - 7.96 X 4.92 MM
GRADING RESULTS
Carat Weight 2.10 CARATS
Color Grade FANCY VIVID GREEN
Clarity Grade VVS 2

June 12, 2026
IGI Report Number LG777613682
Description LABORATORY GROWN DIAMOND
Shape and Cutting Style OLD EUROPEAN CUT
Measurements 7.94 - 7.96 X 4.92 MM

GRADING RESULTS

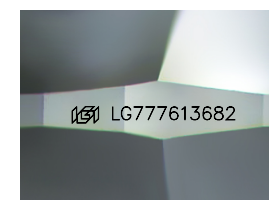
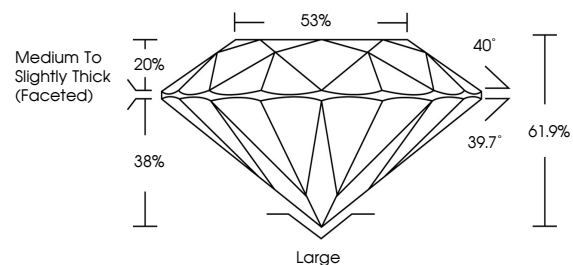
Carat Weight 2.10 CARATS
Color Grade FANCY VIVID GREEN
Clarity Grade VVS 2

ADDITIONAL GRADING INFORMATION

Polish EXCELLENT
Symmetry EXCELLENT
Fluorescence VERY SLIGHT
Inscription(s) IGI LG777613682

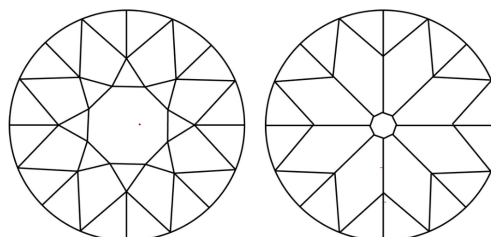
Comments: This Laboratory Grown Diamond was created by Chemical Vapor Deposition (CVD) growth process.
Indications of post-growth treatment.

PROPORTIONS



Sample Image Used

CLARITY CHARACTERISTICS



KEY TO SYMBOLS

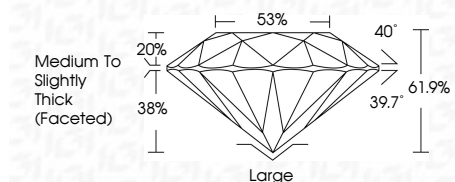
Red symbols indicate internal characteristics.
Green symbols indicate external characteristics.

COLOR

D E F G H I J Faint Very Light Light

CLARITY

Table with columns: FL, IF, VVS 1-2, VS 1-2, SI 1-2, I 1-3 and corresponding descriptions: Flawless, Internally Flawless, Very Very Slightly Included, Very Slightly Included, Slightly Included, Included



ADDITIONAL GRADING INFORMATION

Polish EXCELLENT
Symmetry EXCELLENT
Fluorescence VERY SLIGHT
Inscription(s) IGI LG777613682
Comments: This Laboratory Grown Diamond was created by Chemical Vapor Deposition (CVD) growth process.
Indications of post-growth treatment.



Summary of report details including date, report number, description, measurements, grading results, and additional information.

Comments: This Laboratory Grown Diamond was created by Chemical Vapor Deposition (CVD) growth process. Indications of post-growth treatment.