



**ELECTRONIC COPY**

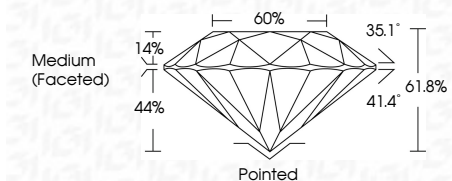
LG777612947  
Report verification at igi.org



February 26, 2026  
IGI Report Number **LG777612947**  
Description **LABORATORY GROWN DIAMOND**  
Shape and Cutting Style **ROUND BRILLIANT**  
Measurements **7.35 - 7.43 X 4.57 MM**

**GRADING RESULTS**

Carat Weight **1.54 CARAT**  
Color Grade **H**  
Clarity Grade **VS 1**  
Cut Grade **EXCELLENT**

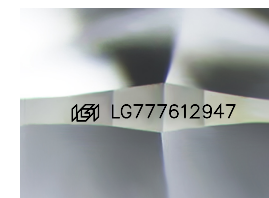


**ADDITIONAL GRADING INFORMATION**

Polish **EXCELLENT**  
Symmetry **VERY GOOD**  
Fluorescence **NONE**  
Inscription(s) **IGI LG777612947**  
Comments: This Laboratory Grown Diamond was created by Chemical Vapor Deposition (CVD) growth process. Type IIa

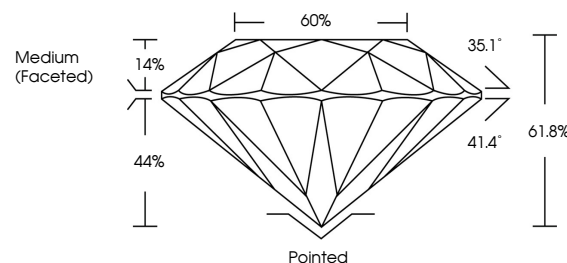


February 26, 2026  
IGI Report No LG777612947  
**ROUND BRILLIANT**  
1.54 CARAT  
Color Grade **H**  
Clarity Grade **VS 1**  
Depth **61.8%**  
Table **60%**  
Girdle **Medium (Faceted)**  
Culet **Pointed**  
Polish **EXCELLENT**  
Symmetry **VERY GOOD**  
Fluorescence **NONE**  
Inscription(s) **IGI LG777612947**  
Comments: This Laboratory Grown Diamond was created by Chemical Vapor Deposition (CVD) growth process. Type IIa

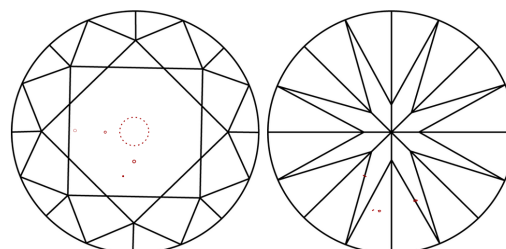


Sample Image Used

**PROPORTIONS**



**CLARITY CHARACTERISTICS**



**KEY TO SYMBOLS**

Red symbols indicate internal characteristics.  
Green symbols indicate external characteristics.

**COLOR**

D E F G H I J Faint Very Light Light

**CLARITY**

FL	IF	VS <sup>1-2</sup>	VS <sup>1-2</sup>	SI <sup>1-2</sup>	I <sup>1-3</sup>
Flawless	Internally Flawless	Very Very Slightly Included	Very Slightly Included	Slightly Included	Included

