



ELECTRONIC COPY

LG777612910
Report verification at igi.org



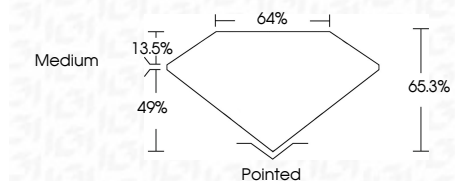
February 26, 2026
IGI Report Number **LG777612910**
Description **LABORATORY GROWN DIAMOND**

Shape and Cutting Style **CUT CORNERED
RECTANGULAR MODIFIED
BRILLIANT**

Measurements **8.06 X 5.85 X 3.82 MM**

GRADING RESULTS

Carat Weight **1.54 CARAT**
Color Grade **F**
Clarity Grade **VS 1**



ADDITIONAL GRADING INFORMATION

Polish **EXCELLENT**
Symmetry **EXCELLENT**
Fluorescence **NONE**
Inscription(s) **IGI LG777612910**
Comments: This Laboratory Grown Diamond was created by Chemical Vapor Deposition (CVD) growth process. Type IIa



February 26, 2026
IGI Report No LG777612910
CUT CORNERED RECT. MODIFIED BRILLIANT
8.06 X 5.85 X 3.82 MM
1.54 CARAT
F
VS 1
65.3%
49%
Medium
Pointed
EXCELLENT
EXCELLENT
NONE
IGI LG777612910
Comments: This Laboratory Grown Diamond was created by Chemical Vapor Deposition (CVD) growth process. Type IIa

LABORATORY GROWN DIAMOND REPORT

February 26, 2026
IGI Report Number **LG777612910**
Description **LABORATORY GROWN DIAMOND**
Shape and Cutting Style **CUT CORNERED RECTANGULAR
MODIFIED BRILLIANT**
Measurements **8.06 X 5.85 X 3.82 MM**

GRADING RESULTS

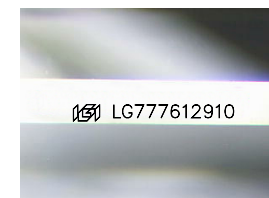
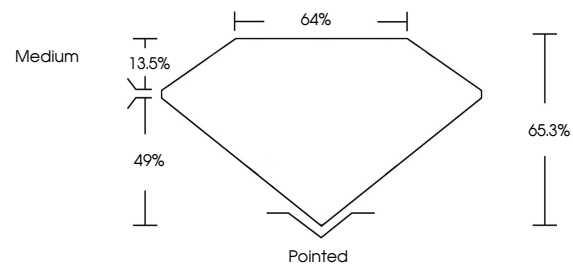
Carat Weight **1.54 CARAT**
Color Grade **F**
Clarity Grade **VS 1**

ADDITIONAL GRADING INFORMATION

Polish **EXCELLENT**
Symmetry **EXCELLENT**
Fluorescence **NONE**
Inscription(s) **IGI LG777612910**

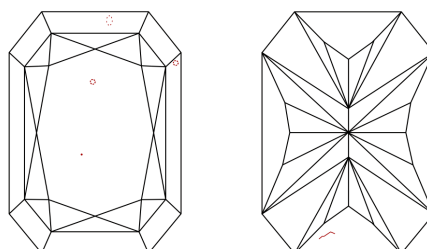
Comments: This Laboratory Grown Diamond was created by Chemical Vapor Deposition (CVD) growth process. Type IIa

PROPORTIONS



Sample Image Used

CLARITY CHARACTERISTICS



KEY TO SYMBOLS

Red symbols indicate internal characteristics.
Green symbols indicate external characteristics.

COLOR

D E F G H I J Faint Very Light Light

CLARITY

FL	IF	VS ¹⁻²	VS ¹⁻²	SI ¹⁻²	I ¹⁻³
Flawless	Internally Flawless	Very Very Slightly Included	Very Slightly Included	Slightly Included	Included

