



**INTERNATIONAL  
GEMOLOGICAL  
INSTITUTE**

**ELECTRONIC COPY**



February 23, 2026

IGI Report Number LG777611816

MARQUISE BRILLIANT  
LABORATORY GROWN DIAMOND

9.41 X 5.04 X 3.21 MM  
0.88 CARAT  
D  
VVS 2  
EXCELLENT  
EXCELLENT  
NONE  
None  
IGI LG777611816

Comments: This Laboratory Grown Diamond was created by Chemical Vapor Deposition (CVD) growth process. Type IIa

**LABORATORY GROWN DIAMOND REPORT**

February 23, 2026  
IGI Report Number **LG777611816**  
Description **LABORATORY GROWN DIAMOND**  
Shape and Cutting Style **MARQUISE BRILLIANT**  
Measurements **9.41 X 5.04 X 3.21 MM**

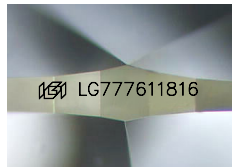
**GRADING RESULTS**

Carat Weight **0.88 CARAT**  
Color Grade **D**  
Clarity Grade **VVS 2**

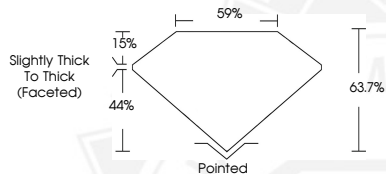
**ADDITIONAL GRADING INFORMATION**

Polish **EXCELLENT**  
Symmetry **EXCELLENT**  
Fluorescence **NONE**  
Inscription(s) **IGI LG777611816**

Comments: This Laboratory Grown Diamond was created by Chemical Vapor Deposition (CVD) growth process. Type IIa



Sample Image Used



February 23, 2026

IGI Report Number LG777611816

MARQUISE BRILLIANT  
LABORATORY GROWN DIAMOND

9.41 X 5.04 X 3.21 MM  
0.88 CARAT  
D  
VVS 2  
EXCELLENT  
EXCELLENT  
NONE  
None  
IGI LG777611816

Comments: This Laboratory Grown Diamond was created by Chemical Vapor Deposition (CVD) growth process. Type IIa



THIS DOCUMENT WAS PRODUCED WITH THE FOLLOWING SECURITY MEASURES: SPECIAL DOCUMENT PAPER, INK SCREENS, WATERMARK, BACKGROUND DESIGNS, HOLOGRAM AND OTHER SECURITY FEATURES NOT LISTED AND DO EXCEED DOCUMENT SECURITY INDUSTRY GUIDELINES.

For terms & conditions and to verify this report, please visit [www.igi.org](http://www.igi.org)