



March 31, 2026

IGI Report Number LG777609900
ROUND BRILLIANT
LABORATORY GROWN DIAMOND
4.71 - 4.73 X 2.94 MM

0.40 CARAT
FANCY INTENSE YELLOW
VVS 1
IDEAL
VERY GOOD
VERY GOOD
NONE
IGI LG777609900

Comments: As Grown - No indication of post-growth treatment. This Laboratory Grown Diamond was created by High Pressure High Temperature (HPHT) growth process.

LABORATORY GROWN DIAMOND REPORT

March 31, 2026
IGI Report Number **LG777609900**
Description **LABORATORY GROWN DIAMOND**
Shape and Cutting Style **ROUND BRILLIANT**
Measurements **4.71 - 4.73 X 2.94 MM**

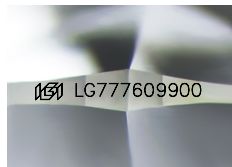
GRADING RESULTS

Carat Weight **0.40 CARAT**
Color Grade **FANCY INTENSE YELLOW**
Clarity Grade **VVS 1**
Cut Grade **IDEAL**

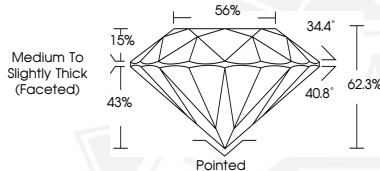
ADDITIONAL GRADING INFORMATION

Polish **VERY GOOD**
Symmetry **VERY GOOD**
Fluorescence **NONE**
Inscription(s) **IGI LG777609900**

Comments: As Grown - No indication of post-growth treatment. This Laboratory Grown Diamond was created by High Pressure High Temperature (HPHT) growth process.



Sample Image Used



March 31, 2026

IGI Report Number LG777609900
ROUND BRILLIANT
LABORATORY GROWN DIAMOND
4.71 - 4.73 X 2.94 MM

0.40 CARAT
FANCY INTENSE YELLOW
VVS 1
IDEAL
VERY GOOD
VERY GOOD
NONE
IGI LG777609900

Comments: As Grown - No indication of post-growth treatment. This Laboratory Grown Diamond was created by High Pressure High Temperature (HPHT) growth process.



THIS DOCUMENT WAS PRODUCED WITH THE FOLLOWING SECURITY MEASURES: SPECIAL DOCUMENT PAPER, INK SCREENS, WATERMARK, BACKGROUND DESIGNS, HOLOGRAM AND OTHER SECURITY FEATURES NOT LISTED AND DO EXCEED DOCUMENT SECURITY INDUSTRY GUIDELINES.