



# INTERNATIONAL GEMOLOGICAL INSTITUTE

ELECTRONIC COPY



March 18, 2026

IGI Report Number **LG777609792**  
ROUND BRILLIANT  
LABORATORY GROWN DIAMOND  
6.22 - 6.27 X 3.73 MM

Carat Weight **0.90 CARAT**  
Color Grade **FANCY LIGHT YELLOW**

Clarity Grade **VVS 2**

Cut Grade **IDEAL**

Polish **EXCELLENT**

Symmetry **EXCELLENT**

Fluorescence **NONE**

Inscription(s) **IGI LG777609792**

Comments: As Grown - No indication of post-growth treatment. This Laboratory Grown Diamond was created by High Pressure High Temperature (HPHT) growth process.

## LABORATORY GROWN DIAMOND REPORT

March 18, 2026

IGI Report Number

**LG777609792**

Description

**LABORATORY GROWN DIAMOND**

Shape and Cutting Style

**ROUND BRILLIANT**

Measurements

**6.22 - 6.27 X 3.73 MM**

### GRADING RESULTS

Carat Weight

**0.90 CARAT**

Color Grade

**FANCY LIGHT YELLOW**

Clarity Grade

**VVS 2**

Cut Grade

**IDEAL**

### ADDITIONAL GRADING INFORMATION

Polish

**EXCELLENT**

Symmetry

**EXCELLENT**

Fluorescence

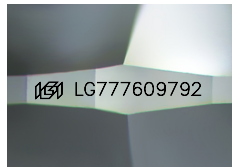
**NONE**

Inscription(s)

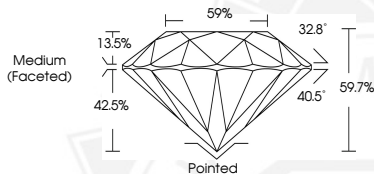
**IGI LG777609792**

Comments: As Grown - No indication of post-growth treatment.

This Laboratory Grown Diamond was created by High Pressure High Temperature (HPHT) growth process.



Sample Image Used



March 18, 2026

IGI Report Number **LG777609792**  
ROUND BRILLIANT  
LABORATORY GROWN DIAMOND  
6.22 - 6.27 X 3.73 MM

Carat Weight **0.90 CARAT**  
Color Grade **FANCY LIGHT YELLOW**

Clarity Grade **VVS 2**

Cut Grade **IDEAL**

Polish **EXCELLENT**

Symmetry **EXCELLENT**

Fluorescence **NONE**

Inscription(s) **IGI LG777609792**

Comments: As Grown - No indication of post-growth treatment. This Laboratory Grown Diamond was created by High Pressure High Temperature (HPHT) growth process.



THIS DOCUMENT WAS PRODUCED WITH THE FOLLOWING SECURITY MEASURES: SPECIAL DOCUMENT PAPER, INK SCREENS, WATERMARK, BACKGROUND DESIGNS, HOLOGRAM AND OTHER SECURITY FEATURES NOT LISTED AND DO EXCEED DOCUMENT SECURITY INDUSTRY GUIDELINES.

For terms & conditions and to verify this report, please visit [www.igi.org](http://www.igi.org)