



**INTERNATIONAL  
GEMOLOGICAL  
INSTITUTE**

**ELECTRONIC COPY**



March 17, 2026

**IGI Report Number** LG777609788  
**ROUND BRILLIANT**  
**LABORATORY GROWN DIAMOND**  
**6.18 - 6.22 X 3.87 MM**

**Carat Weight** 0.92 CARAT  
**Color Grade** FANCY INTENSE  
**YELLOW**

**Clarity Grade** VS 1  
**Cut Grade** IDEAL

**Polish** EXCELLENT  
**Symmetry** EXCELLENT  
**Fluorescence** NONE

**Inscription(s)** IGI LG777609788

**Comments:** As Grown - No indication of post-growth treatment. This Laboratory Grown Diamond was created by High Pressure High Temperature (HPHT) growth process.

**LABORATORY GROWN DIAMOND REPORT**

March 17, 2026

IGI Report Number

LG777609788

Description

LABORATORY GROWN DIAMOND

Shape and Cutting Style

ROUND BRILLIANT

Measurements

6.18 - 6.22 X 3.87 MM

**GRADING RESULTS**

Carat Weight

0.92 CARAT

Color Grade

FANCY INTENSE YELLOW

Clarity Grade

VS 1

Cut Grade

IDEAL

**ADDITIONAL GRADING INFORMATION**

Polish

EXCELLENT

Symmetry

EXCELLENT

Fluorescence

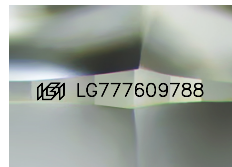
NONE

Inscription(s)

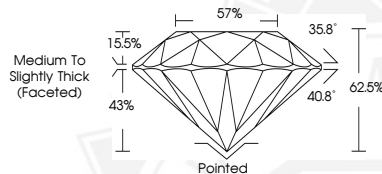
IGI LG777609788

**Comments:** As Grown - No indication of post-growth treatment.

This Laboratory Grown Diamond was created by High Pressure High Temperature (HPHT) growth process.



Sample Image Used



March 17, 2026

**IGI Report Number** LG777609788  
**ROUND BRILLIANT**  
**LABORATORY GROWN DIAMOND**  
**6.18 - 6.22 X 3.87 MM**

**Carat Weight** 0.92 CARAT  
**Color Grade** FANCY INTENSE  
**YELLOW**

**Clarity Grade** VS 1  
**Cut Grade** IDEAL

**Polish** EXCELLENT  
**Symmetry** EXCELLENT  
**Fluorescence** NONE

**Inscription(s)** IGI LG777609788

**Comments:** As Grown - No indication of post-growth treatment. This Laboratory Grown Diamond was created by High Pressure High Temperature (HPHT) growth process.



THIS DOCUMENT WAS PRODUCED WITH THE FOLLOWING SECURITY MEASURES: SPECIAL DOCUMENT PAPER, INK SCREENS, WATERMARK, BACKGROUND DESIGNS, HOLOGRAM AND OTHER SECURITY FEATURES NOT LISTED AND DO EXCEED DOCUMENT SECURITY INDUSTRY GUIDELINES.

For terms & conditions and to verify this report, please visit [www.igi.org](http://www.igi.org)