



March 17, 2026

IGI Report Number LG777609769
ROUND BRILLIANT
LABORATORY GROWN DIAMOND
6.26 - 6.30 X 3.92 MM

Carat Weight 0.95 CARAT
Color Grade FANCY INTENSE YELLOW

Clarity Grade VS 1
Cut Grade IDEAL

Polish EXCELLENT
Symmetry EXCELLENT

Fluorescence NONE
Inscription(s) IGI LG777609769

Comments: As Grown - No indication of post-growth treatment. This Laboratory Grown Diamond was created by High Pressure High Temperature (HPHT) growth process.

LABORATORY GROWN DIAMOND REPORT

March 17, 2026

IGI Report Number

LG777609769

Description

LABORATORY GROWN DIAMOND

Shape and Cutting Style

ROUND BRILLIANT

Measurements

6.26 - 6.30 X 3.92 MM

GRADING RESULTS

Carat Weight

0.95 CARAT

Color Grade

FANCY INTENSE YELLOW

Clarity Grade

VS 1

Cut Grade

IDEAL

ADDITIONAL GRADING INFORMATION

Polish

EXCELLENT

Symmetry

EXCELLENT

Fluorescence

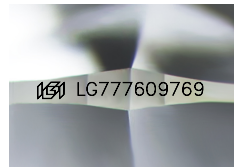
NONE

Inscription(s)

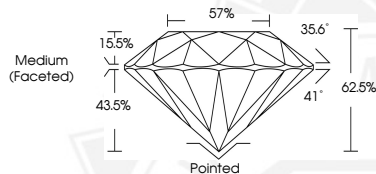
IGI LG777609769

Comments: As Grown - No indication of post-growth treatment.

This Laboratory Grown Diamond was created by High Pressure High Temperature (HPHT) growth process.



Sample Image Used



March 17, 2026

IGI Report Number LG777609769
ROUND BRILLIANT
LABORATORY GROWN DIAMOND
6.26 - 6.30 X 3.92 MM

Carat Weight 0.95 CARAT
Color Grade FANCY INTENSE YELLOW

Clarity Grade VS 1
Cut Grade IDEAL

Polish EXCELLENT
Symmetry EXCELLENT

Fluorescence NONE
Inscription(s) IGI LG777609769

Comments: As Grown - No indication of post-growth treatment. This Laboratory Grown Diamond was created by High Pressure High Temperature (HPHT) growth process.



THIS DOCUMENT WAS PRODUCED WITH THE FOLLOWING SECURITY MEASURES: SPECIAL DOCUMENT PAPER, INK SCREENS, WATERMARK, BACKGROUND DESIGNS, HOLOGRAM AND OTHER SECURITY FEATURES NOT LISTED AND DO EXCEED DOCUMENT SECURITY INDUSTRY GUIDELINES.