



**INTERNATIONAL
GEMOLOGICAL
INSTITUTE**

LABORATORY GROWN DIAMOND REPORT

March 12, 2026
 IGI Report Number **LG777609665**
 Description **LABORATORY GROWN DIAMOND**
 Shape and Cutting Style **ROUND BRILLIANT**
 Measurements **4.35 - 4.39 X 2.70 MM**

GRADING RESULTS

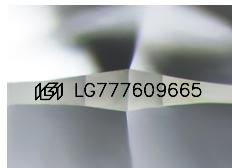
Carat Weight **0.32 CARAT**
 Color Grade **FANCY LIGHT YELLOW**
 Clarity Grade **VVS 1**
 Cut Grade **IDEAL**

ADDITIONAL GRADING INFORMATION

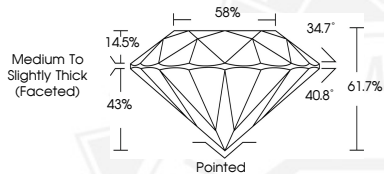
Polish **VERY GOOD**
 Symmetry **VERY GOOD**
 Fluorescence **NONE**
 Inscription(s) **IGI LG777609665**

Comments: This Laboratory Grown Diamond was created by Chemical Vapor Deposition (CVD) growth process.

ELECTRONIC COPY



Sample Image Used



March 12, 2026
 IGI Report Number **LG777609665**
ROUND BRILLIANT
LABORATORY GROWN DIAMOND
4.35 - 4.39 X 2.70 MM
 Carat Weight **0.32 CARAT**
 Color Grade **FANCY LIGHT YELLOW**
 Clarity Grade **VVS 1**
 Cut Grade **IDEAL**
 Polish **VERY GOOD**
 Symmetry **VERY GOOD**
 Fluorescence **NONE**
 Inscription(s) **IGI LG777609665**

Comments: This Laboratory Grown Diamond was created by Chemical Vapor Deposition (CVD) growth process.



March 12, 2026
 IGI Report Number **LG777609665**
ROUND BRILLIANT
LABORATORY GROWN DIAMOND
4.35 - 4.39 X 2.70 MM
 Carat Weight **0.32 CARAT**
 Color Grade **FANCY LIGHT YELLOW**
 Clarity Grade **VVS 1**
 Cut Grade **IDEAL**
 Polish **VERY GOOD**
 Symmetry **VERY GOOD**
 Fluorescence **NONE**
 Inscription(s) **IGI LG777609665**

Comments: This Laboratory Grown Diamond was created by Chemical Vapor Deposition (CVD) growth process.



THIS DOCUMENT WAS PRODUCED WITH THE FOLLOWING SECURITY MEASURES: SPECIAL DOCUMENT PAPER, INK SCREENS, WATERMARK, BACKGROUND DESIGNS, HOLOGRAM AND OTHER SECURITY FEATURES NOT LISTED AND DO EXCEED DOCUMENT SECURITY INDUSTRY GUIDELINES.

For terms & conditions and to verify this report, please visit www.igi.org