



LABORATORY GROWN DIAMOND REPORT

February 23, 2026
 IGI Report Number **LG777607162**
 Description **LABORATORY GROWN DIAMOND**
 Shape and Cutting Style **PEAR BRILLIANT**
 Measurements **6.64 X 4.05 X 2.54 MM**

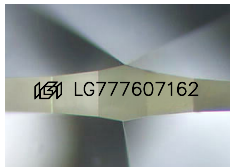
GRADING RESULTS

Carat Weight **0.41 CARAT**
 Color Grade **D**
 Clarity Grade **VVS 2**

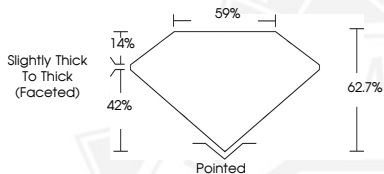
ADDITIONAL GRADING INFORMATION

Polish **EXCELLENT**
 Symmetry **EXCELLENT**
 Fluorescence **NONE**
 Inscription(s) **IGI LG777607162**

Comments: This Laboratory Grown Diamond was created by Chemical Vapor Deposition (CVD) growth process. Type IIa



Sample Image Used



February 23, 2026
 IGI Report Number **LG777607162**
PEAR BRILLIANT
LABORATORY GROWN DIAMOND
6.64 X 4.05 X 2.54 MM
 Carat Weight **0.41 CARAT**
 Color Grade **D**
 Clarity Grade **VVS 2**
 Polish **EXCELLENT**
 Symmetry **EXCELLENT**
 Fluorescence **NONE**
 Inscription(s) **IGI LG777607162**

Comments: This Laboratory Grown Diamond was created by Chemical Vapor Deposition (CVD) growth process. Type IIa



February 23, 2026
 IGI Report Number **LG777607162**
PEAR BRILLIANT
LABORATORY GROWN DIAMOND
6.64 X 4.05 X 2.54 MM
 Carat Weight **0.41 CARAT**
 Color Grade **D**
 Clarity Grade **VVS 2**
 Polish **EXCELLENT**
 Symmetry **EXCELLENT**
 Fluorescence **NONE**
 Inscription(s) **IGI LG777607162**

Comments: This Laboratory Grown Diamond was created by Chemical Vapor Deposition (CVD) growth process. Type IIa



THIS DOCUMENT WAS PRODUCED WITH THE FOLLOWING SECURITY MEASURES: SPECIAL DOCUMENT PAPER, INK SCREENS, WATERMARK, BACKGROUND DESIGNS, HOLOGRAM AND OTHER SECURITY FEATURES NOT LISTED AND DO EXCEED DOCUMENT SECURITY INDUSTRY GUIDELINES.