



ELECTRONIC COPY

LG776699990 Report verification at igi.org



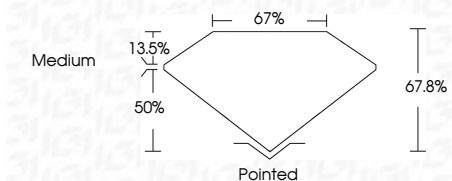
February 24, 2026 IGI Report Number LG776699990 Description LABORATORY GROWN DIAMOND

Shape and Cutting Style CUT CORNERED RECTANGULAR MODIFIED BRILLIANT

Measurements 10.75 X 7.95 X 5.39 MM

GRADING RESULTS

Carat Weight 4.03 CARATS Color Grade E Clarity Grade VVS 2



ADDITIONAL GRADING INFORMATION

Polish EXCELLENT Symmetry EXCELLENT Fluorescence NONE Inscription(s) IGI LG776699990

Comments: This Laboratory Grown Diamond was created by Chemical Vapor Deposition (CVD) growth process. Type IIa



February 24, 2026 IGI Report No LG776699990 CUT CORNERED RECT. MODIFIED BRILLIANT 10.75 X 7.95 X 5.39 MM 4.03 CARATS E VVS 2 67.8% 67% Medium Pointed EXCELLENT EXCELLENT NONE NONE IGI LG776699990

Comments: This Laboratory Grown Diamond was created by Chemical Vapor Deposition (CVD) growth process. Type IIa

February 24, 2026 IGI Report Number LG776699990 Description LABORATORY GROWN DIAMOND Shape and Cutting Style CUT CORNERED RECTANGULAR MODIFIED BRILLIANT Measurements 10.75 X 7.95 X 5.39 MM

GRADING RESULTS

Carat Weight 4.03 CARATS Color Grade E Clarity Grade VVS 2

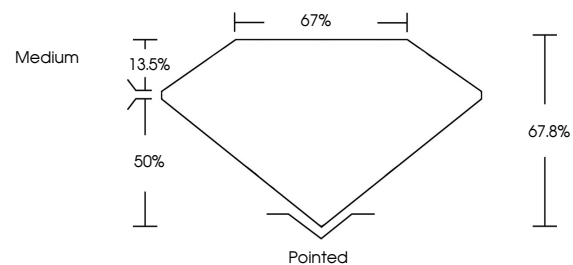
ADDITIONAL GRADING INFORMATION

Polish EXCELLENT Symmetry EXCELLENT Fluorescence NONE

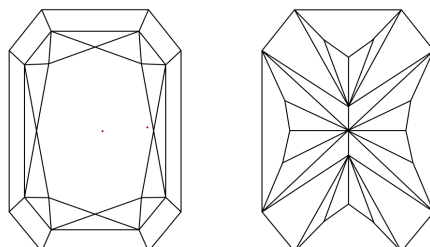
Inscription(s) IGI LG776699990

Comments: This Laboratory Grown Diamond was created by Chemical Vapor Deposition (CVD) growth process. Type IIa

PROPORTIONS

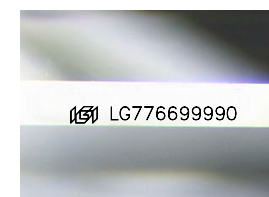


CLARITY CHARACTERISTICS



KEY TO SYMBOLS

Red symbols indicate internal characteristics. Green symbols indicate external characteristics.



Sample Image Used

COLOR

D E F G H I J Faint Very Light Light

CLARITY

FL IF VVS 1-2 VS 1-2 SI 1-2 I 1-3 Flawless Internally Flawless Very Very Slightly Included Very Slightly Included Slightly Included Included

