



**ELECTRONIC COPY**

LG776698836  
Report verification at igi.org



February 27, 2026  
IGI Report Number **LG776698836**  
Description **LABORATORY GROWN DIAMOND**  
Shape and Cutting Style **MODIFIED MARQUISE STEP CUT**  
Measurements **10.26 X 5.55 X 3.02 MM**  
**GRADING RESULTS**  
Carat Weight **1.16 CARAT**  
Color Grade **F**  
Clarity Grade **VVS 2**

February 27, 2026  
IGI Report Number **LG776698836**  
Description **LABORATORY GROWN DIAMOND**  
Shape and Cutting Style **MODIFIED MARQUISE STEP CUT**  
Measurements **10.26 X 5.55 X 3.02 MM**

**GRADING RESULTS**

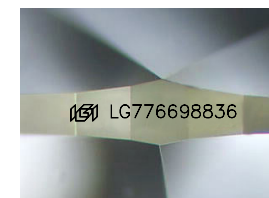
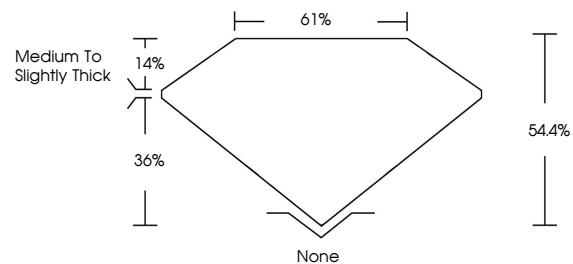
Carat Weight **1.16 CARAT**  
Color Grade **F**  
Clarity Grade **VVS 2**

**ADDITIONAL GRADING INFORMATION**

Polish **EXCELLENT**  
Symmetry **EXCELLENT**  
Fluorescence **NONE**  
Inscription(s) **IGI LG776698836**

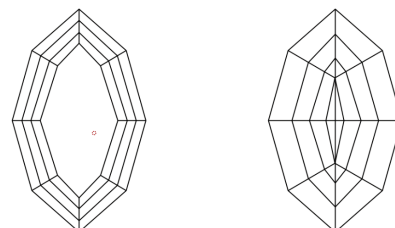
Comments: This Laboratory Grown Diamond was created by Chemical Vapor Deposition (CVD) growth process. Type IIa

**PROPORTIONS**



Sample Image Used

**CLARITY CHARACTERISTICS**



**KEY TO SYMBOLS**

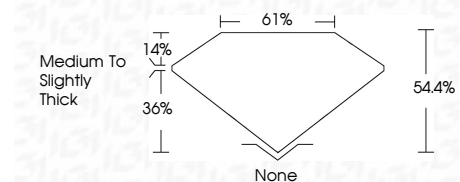
Red symbols indicate internal characteristics.  
Green symbols indicate external characteristics.

**COLOR**

D E F G H I J Faint Very Light Light

**CLARITY**

FL	IF	VVS <sup>1-2</sup>	VS <sup>1-2</sup>	SI <sup>1-2</sup>	I <sup>1-3</sup>
Flawless	Internally Flawless	Very Very Slightly Included	Very Slightly Included	Slightly Included	Included



**ADDITIONAL GRADING INFORMATION**

Polish **EXCELLENT**  
Symmetry **EXCELLENT**  
Fluorescence **NONE**  
Inscription(s) **IGI LG776698836**  
Comments: This Laboratory Grown Diamond was created by Chemical Vapor Deposition (CVD) growth process. Type IIa



February 27, 2026  
IGI Report No **LG776698836**  
**MODIFIED MARQUISE STEP CUT**  
10.26 X 5.55 X 3.02 MM  
1.16 CARAT  
Color Grade **F**  
Clarity Grade **VVS 2**  
Depth **54.4%**  
Table **61%**  
Girdle **Medium to Slightly Thick**  
Culet **None**  
Polish **EXCELLENT**  
Symmetry **EXCELLENT**  
Fluorescence **NONE**  
Inscription(s) **IGI LG776698836**  
Comments: This Laboratory Grown Diamond was created by Chemical Vapor Deposition (CVD) growth process. Type IIa