



**ELECTRONIC COPY**

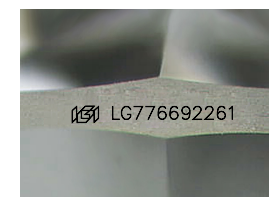
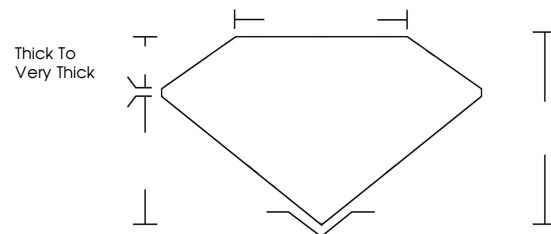
LG776692261  
Report verification at [igi.org](http://igi.org)



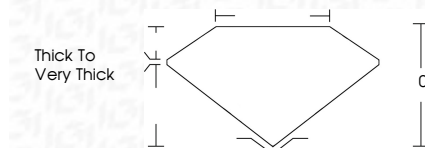
April 13, 2026  
IGI Report Number **LG776692261**  
Description **LABORATORY GROWN DIAMOND**  
Shape and Cutting Style **FREEFORM FACETED**  
Measurements **17.82 X 13.18 X 2.74 MM**  
**GRADING RESULTS**  
Carat Weight **6.60 CARATS**  
Color Grade **FANCY VIVID GREEN**  
Clarity Grade **VS 2**

April 13, 2026  
IGI Report Number **LG776692261**  
Description **LABORATORY GROWN DIAMOND**  
Shape and Cutting Style **FREEFORM FACETED**  
Measurements **17.82 X 13.18 X 2.74 MM**  
**GRADING RESULTS**  
Carat Weight **6.60 CARATS**  
Color Grade **FANCY VIVID GREEN**  
Clarity Grade **VS 2**

**PROPORTIONS**



Sample Image Used



**ADDITIONAL GRADING INFORMATION**  
Polish **VERY GOOD**  
Symmetry **VERY GOOD**  
Fluorescence **NONE**  
Inscription(s) **IGI LG776692261**  
Comments: This Laboratory Grown Diamond was created by Chemical Vapor Deposition (CVD) growth process.  
Indications of post-growth treatment.

**COLOR**

D E F G H I J Faint Very Light Light

**CLARITY**

FL	IF	VS <sup>1-2</sup>	VS <sup>1-2</sup>	SI <sup>1-2</sup>	I <sup>1-3</sup>
Flawless	Internally Flawless	Very Very Slightly Included	Very Slightly Included	Slightly Included	Included

**ADDITIONAL GRADING INFORMATION**

Polish **VERY GOOD**  
Symmetry **VERY GOOD**  
Fluorescence **NONE**  
Inscription(s) **IGI LG776692261**  
Comments: This Laboratory Grown Diamond was created by Chemical Vapor Deposition (CVD) growth process.  
Indications of post-growth treatment.



April 13, 2026  
IGI Report No **LG776692261**  
**FREEFORM FACETED**  
**6.60 CARATS**  
Carat Weight  
**FANCY VIVID GREEN**  
Color Grade  
**VS 2**  
Clarity Grade  
**0%**  
Depth  
**0%**  
Girdle  
**Thick to Very Thick**  
Culet  
**VERY GOOD**  
Polish  
**VERY GOOD**  
Symmetry  
**NONE**  
Fluorescence  
**IGI LG776692261**  
Inscription(s)  
Comments: This Laboratory Grown Diamond was created by Chemical Vapor Deposition (CVD) growth process.  
Indications of post-growth treatment.