



**ELECTRONIC COPY**

LG776690476  
Report verification at igi.org



February 20, 2026

IGI Report Number **LG776690476**

Description **LABORATORY GROWN DIAMOND**

Shape and Cutting Style **ROUND BRILLIANT**

Measurements **8.34 - 8.40 X 5.13 MM**

**GRADING RESULTS**

Carat Weight **2.21 CARATS**

Color Grade **D**

Clarity Grade **INTERNALLY FLAWLESS**

Cut Grade **IDEAL**

February 20, 2026

IGI Report Number **LG776690476**

Description **LABORATORY GROWN DIAMOND**

Shape and Cutting Style **ROUND BRILLIANT**

Measurements **8.34 - 8.40 X 5.13 MM**

**GRADING RESULTS**

Carat Weight **2.21 CARATS**

Color Grade **D**

Clarity Grade **INTERNALLY FLAWLESS**

Cut Grade **IDEAL**

**ADDITIONAL GRADING INFORMATION**

Polish **EXCELLENT**

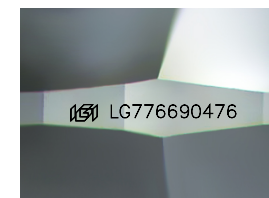
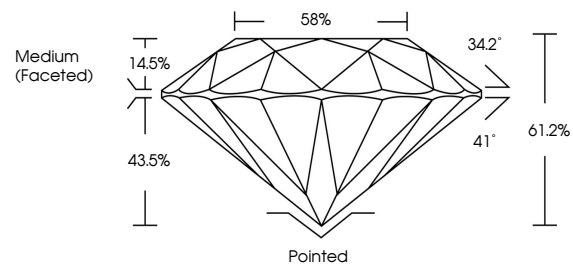
Symmetry **EXCELLENT**

Fluorescence **NONE**

Inscription(s) **LG776690476**

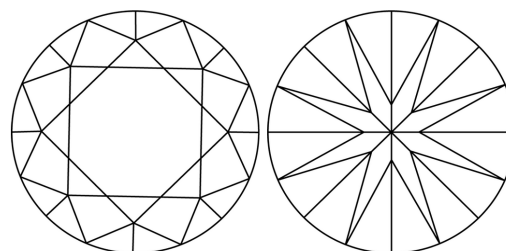
Comments: HEARTS & ARROWS  
As Grown - No indication of post-growth treatment.  
This Laboratory Grown Diamond was created by High Pressure High Temperature (HPHT) growth process.  
Type II

**PROPORTIONS**



Sample Image Used

**CLARITY CHARACTERISTICS**



**KEY TO SYMBOLS**

Red symbols indicate internal characteristics.  
Green symbols indicate external characteristics.

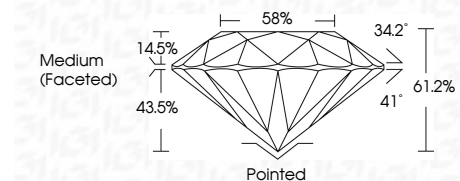


**COLOR**

D E F G H I J Faint Very Light Light

**CLARITY**

FL	IF	VS <sup>1-2</sup>	VS <sup>1-2</sup>	SI <sup>1-2</sup>	I <sup>1-3</sup>
Flawless	Internally Flawless	Very Very Slightly Included	Very Slightly Included	Slightly Included	Included



**ADDITIONAL GRADING INFORMATION**

Polish **EXCELLENT**

Symmetry **EXCELLENT**

Fluorescence **NONE**

Inscription(s) **LG776690476**

Comments: HEARTS & ARROWS  
As Grown - No indication of post-growth treatment.  
This Laboratory Grown Diamond was created by High Pressure High Temperature (HPHT) growth process.  
Type II



**IGI**



February 20, 2026	IGI Report No <b>LG776690476</b>	<b>2.21 CARATS</b>	<b>D</b>
<b>ROUND BRILLIANT</b>	<b>8.34 - 8.40 X 5.13 MM</b>	<b>IDEAL</b>	<b>IF</b>
Carat Weight	Color Grade	Clarity Grade	Depth
2.21 CARATS	D	IDEAL	61.2%
Color Grade	Cut Grade	Table	58%
D	IDEAL	58%	Medium (Faceted)
Clarity Grade	Grading	Culet	Pointed
INTERNALLY FLAWLESS	EXCELLENT	EXCELLENT	EXCELLENT
Cut Grade	Symmetry	Fluorescence	NONE
IDEAL	EXCELLENT	NONE	None
Inscription(s)	Inscription(s)	Inscription(s)	Inscription(s)
LG776690476	LG776690476	LG776690476	LG776690476

Comments: HEARTS & ARROWS  
As Grown - No indication of post-growth treatment.  
This Laboratory Grown Diamond was created by High Pressure High Temperature (HPHT) growth process.  
Type II