



**ELECTRONIC COPY**

LG776688073  
Report verification at igi.org



February 24, 2026

IGI Report Number **LG776688073**

Description **LABORATORY GROWN DIAMOND**

Shape and Cutting Style **ROUND BRILLIANT**

Measurements **8.26 - 8.30 X 4.98 MM**

**GRADING RESULTS**

Carat Weight **2.09 CARATS**

Color Grade **E**

Clarity Grade **VVS 2**

Cut Grade **IDEAL**

February 24, 2026

IGI Report Number **LG776688073**

Description **LABORATORY GROWN DIAMOND**

Shape and Cutting Style **ROUND BRILLIANT**

Measurements **8.26 - 8.30 X 4.98 MM**

**GRADING RESULTS**

Carat Weight **2.09 CARATS**

Color Grade **E**

Clarity Grade **VVS 2**

Cut Grade **IDEAL**

**ADDITIONAL GRADING INFORMATION**

Polish **EXCELLENT**

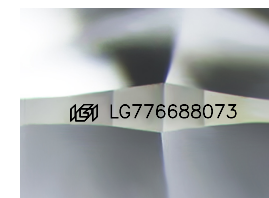
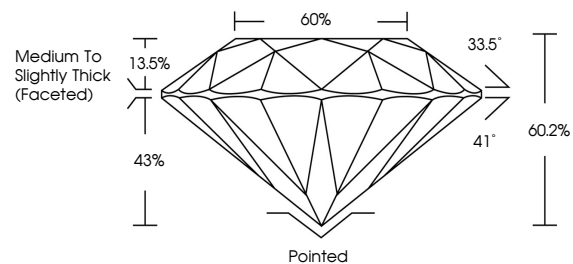
Symmetry **EXCELLENT**

Fluorescence **NONE**

Inscription(s) **IGI LG776688073**

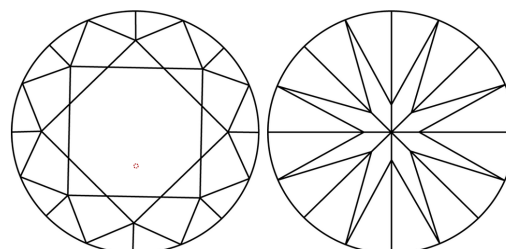
Comments: This Laboratory Grown Diamond was created by Chemical Vapor Deposition (CVD) growth process.  
Type IIa

**PROPORTIONS**



Sample Image Used

**CLARITY CHARACTERISTICS**



**KEY TO SYMBOLS**

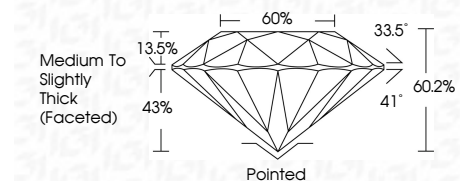
Red symbols indicate internal characteristics.  
Green symbols indicate external characteristics.

**COLOR**

D E F G H I J Faint Very Light Light

**CLARITY**

| FL       | IF                  | VVS <sup>1-2</sup>          | VS <sup>1-2</sup>      | SI <sup>1-2</sup> | I <sup>1-3</sup> |
|----------|---------------------|-----------------------------|------------------------|-------------------|------------------|
| Flawless | Internally Flawless | Very Very Slightly Included | Very Slightly Included | Slightly Included | Included         |



**ADDITIONAL GRADING INFORMATION**

Polish **EXCELLENT**

Symmetry **EXCELLENT**

Fluorescence **NONE**

Inscription(s) **IGI LG776688073**

Comments: This Laboratory Grown Diamond was created by Chemical Vapor Deposition (CVD) growth process.  
Type IIa



**IGI**



|                       |                           |              |             |               |           |           |                                    |  |
|-----------------------|---------------------------|--------------|-------------|---------------|-----------|-----------|------------------------------------|--|
| February 24, 2026     | IGI Report No LG776688073 | 2.09 CARATS  | E           | Pointed       | EXCELLENT | EXCELLENT | NONE                               | IGI LG776688073  |
| 8.26 - 8.30 X 4.98 MM | ROUND BRILLIANT           | Carat Weight | Color Grade | Clarity Grade | Depth     | Table     | Grade                              | Culet  |
|                       |                           |              | VVS 2       | IDEAL         | 60.2%     | 60%       | Medium To Slightly Thick (Faceted) | Polish   |
|                       |                           |              |             |               |           |           |                                    | Symmetry   |
|                       |                           |              |             |               |           |           |                                    | Fluorescence   |
|                       |                           |              |             |               |           |           |                                    | Inscription(s)   |
|                       |                           |              |             |               |           |           |                                    | Comments: This Laboratory Grown Diamond was created by Chemical Vapor Deposition (CVD) growth process.<br>Type IIa |