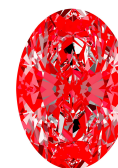




Light Performance Grade: Exceptional



Structured Light Environment Representation



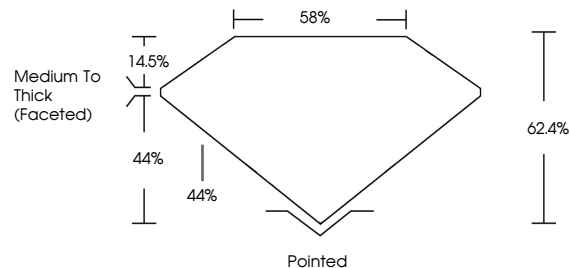
COLOR

D E F G H I J Faint Very Light Light

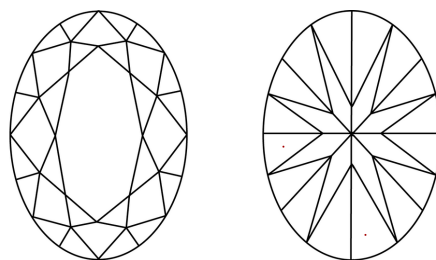
CLARITY

Table with 6 columns: FL, IF, VS 1-2, VS 1-2, SI 1-2, I 1-3. Rows: Flawless, Internally Flawless, Very Very Slightly Included, Very Slightly Included, Slightly Included, Included.

PROPORTIONS



CLARITY CHARACTERISTICS



KEY TO SYMBOLS

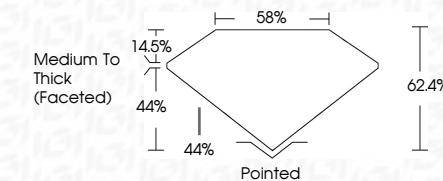
Red symbols indicate internal characteristics. Green symbols indicate external characteristics.



Sample Image Used



February 23, 2026 IGI Report Number LG776686582 Description LABORATORY GROWN DIAMOND Shape and Cutting Style OVAL BRILLIANT Measurements 13.29 X 9.26 X 5.78 MM GRADING RESULTS Carat Weight 4.42 CARATS Color Grade F Clarity Grade VVS 1



ADDITIONAL GRADING INFORMATION

Polish EXCELLENT Symmetry EXCELLENT Fluorescence NONE Inscription(s) IGI LG776686582 Comments: This Laboratory Grown Diamond was created by Chemical Vapor Deposition (CVD) growth process. Type IIa



IGI

February 23, 2026 IGI Report No LG776686582 OVAL BRILLIANT 13.29 X 9.26 X 5.78 MM Carat Weight 4.42 CARATS Color Grade F Clarity Grade VVS 1 Depth 62.4% Table 56% Girdle Medium To Thick (Faceted) Culet Pointed Polish EXCELLENT Symmetry EXCELLENT Fluorescence NONE Inscription(s) IGI LG776686582 Comments: This Laboratory Grown Diamond was created by Chemical Vapor Deposition (CVD) growth process. Type IIa