



ELECTRONIC COPY

LG776679808
Report verification at igi.org



February 20, 2026

IGI Report Number **LG776679808**

Description **LABORATORY GROWN DIAMOND**

Shape and Cutting Style **OPTICA STELO (ROUND
MODIFIED BRILLIANT)**

Measurements **9.85 - 9.91 X 6.10 MM**

GRADING RESULTS

Carat Weight **3.69 CARATS**

Color Grade **E**

Clarity Grade **VS 1**

Cut Grade **EXCELLENT**

LABORATORY GROWN DIAMOND REPORT

February 20, 2026

IGI Report Number **LG776679808**

Description **LABORATORY GROWN DIAMOND**

Shape and Cutting Style **OPTICA STELO (ROUND
MODIFIED BRILLIANT)**

Measurements **9.85 - 9.91 X 6.10 MM**

GRADING RESULTS

Carat Weight **3.69 CARATS**

Color Grade **E**

Clarity Grade **VS 1**

Cut Grade **EXCELLENT**

ADDITIONAL GRADING INFORMATION

Polish **EXCELLENT**

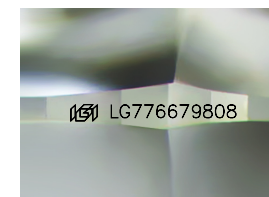
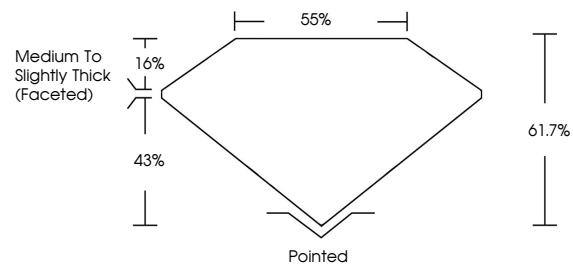
Symmetry **EXCELLENT**

Fluorescence **NONE**

Inscription(s) **IGI LG776679808**

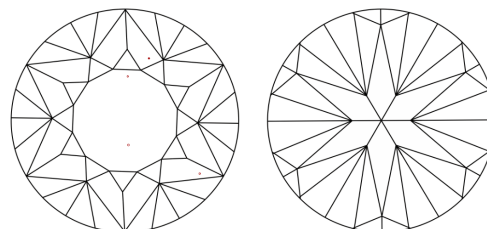
Comments: This Laboratory Grown Diamond was created by Chemical Vapor Deposition (CVD) growth process. Type IIa

PROPORTIONS



Sample Image Used

CLARITY CHARACTERISTICS



KEY TO SYMBOLS

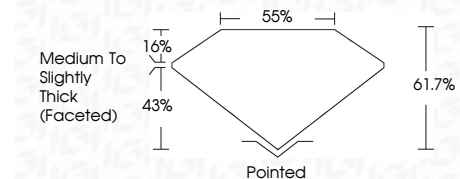
Red symbols indicate internal characteristics.
Green symbols indicate external characteristics.

COLOR

D E F G H I J Faint Very Light Light

CLARITY

FL	IF	VS ¹⁻²	VS ¹⁻²	SI ¹⁻²	I ¹⁻³
Flawless	Internally Flawless	Very Very Slightly Included	Very Slightly Included	Slightly Included	Included



ADDITIONAL GRADING INFORMATION

Polish **EXCELLENT**

Symmetry **EXCELLENT**

Fluorescence **NONE**

Inscription(s) **IGI LG776679808**

Comments: This Laboratory Grown Diamond was created by Chemical Vapor Deposition (CVD) growth process. Type IIa



February 20, 2026
IGI Report No LG776679808
OPTICA STELO (ROUND MODIFIED BRILLIANT)
9.85 - 9.91 X 6.10 MM
3.69 CARATS E
Color Grade EXCELLENT
Clarity Grade VS 1
Depth 61.7%
Table 55%
Medium To Slightly Thick (Faceted)
Culet Pointed
Polish EXCELLENT
Symmetry EXCELLENT
Fluorescence NONE
Inscription(s) IGI LG776679808
Comments: This Laboratory Grown Diamond was created by Chemical Vapor Deposition (CVD) growth process. Type IIa