



**ELECTRONIC COPY**

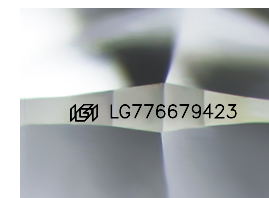
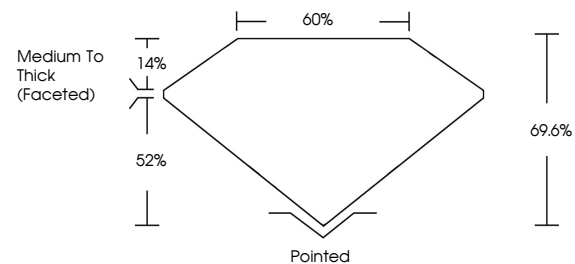
LG776679423  
Report verification at igi.org



March 13, 2026  
IGI Report Number **LG776679423**  
Description **LABORATORY GROWN DIAMOND**  
Shape and Cutting Style **CUSHION MODIFIED BRILLIANT**  
Measurements **11.48 X 7.61 X 5.30 MM**  
**GRADING RESULTS**  
Carat Weight **4.06 CARATS**  
Color Grade **D**  
Clarity Grade **VVS 1**

March 13, 2026  
IGI Report Number **LG776679423**  
Description **LABORATORY GROWN DIAMOND**  
Shape and Cutting Style **CUSHION MODIFIED BRILLIANT**  
Measurements **11.48 X 7.61 X 5.30 MM**

**PROPORTIONS**

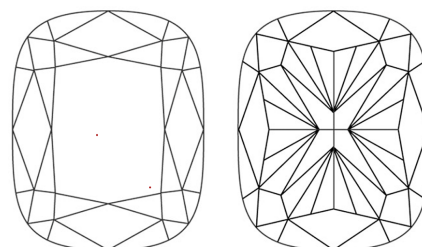


Sample Image Used

**GRADING RESULTS**

Carat Weight **4.06 CARATS**  
Color Grade **D**  
Clarity Grade **VVS 1**

**CLARITY CHARACTERISTICS**



**KEY TO SYMBOLS**

Red symbols indicate internal characteristics.  
Green symbols indicate external characteristics.

**ADDITIONAL GRADING INFORMATION**

Polish **EXCELLENT**  
Symmetry **EXCELLENT**  
Fluorescence **NONE**  
Inscription(s) **IGI LG776679423**

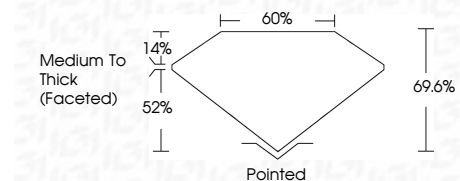
Comments: This Laboratory Grown Diamond was created by Chemical Vapor Deposition (CVD) growth process. Type IIa

**COLOR**

D E F G H I J Faint Very Light Light

**CLARITY**

FL	IF	VVS <sup>1-2</sup>	VS <sup>1-2</sup>	SI <sup>1-2</sup>	I <sup>1-3</sup>
Flawless	Internally Flawless	Very Very Slightly Included	Very Slightly Included	Slightly Included	Included



**ADDITIONAL GRADING INFORMATION**

Polish **EXCELLENT**  
Symmetry **EXCELLENT**  
Fluorescence **NONE**  
Inscription(s) **IGI LG776679423**  
Comments: This Laboratory Grown Diamond was created by Chemical Vapor Deposition (CVD) growth process. Type IIa



March 13, 2026  
IGI Report No **LG776679423**  
**CUSHION MODIFIED BRILLIANT**  
**4.06 CARATS**  
D  
Carat Weight **4.06**  
Color Grade **D**  
Clarity Grade **VVS 1**  
Depth **69.6%**  
Table **52%**  
Girdle **Medium To Thick (Faceted)**  
Culet **Pointed**  
Polish **EXCELLENT**  
Symmetry **EXCELLENT**  
Fluorescence **NONE**  
Inscription(s) **IGI LG776679423**  
Comments: This Laboratory Grown Diamond was created by Chemical Vapor Deposition (CVD) growth process. Type IIa