



March 24, 2026

IGI Report Number **LG776676287**

**OVAL BRILLIANT  
LABORATORY GROWN DIAMOND  
7.02 X 5.11 X 3.20 MM**

Carat Weight	<b>0.79 CARAT</b>
Color Grade	<b>F</b>
Clarity Grade	<b>SI 1</b>
Polish	<b>VERY GOOD</b>
Symmetry	<b>VERY GOOD</b>
Fluorescence	<b>NONE</b>
Inscription(s)	<b>IGI LG776676287</b>

Comments: This Laboratory Grown Diamond was created by Chemical Vapor Deposition (CVD) growth process. Type IIa

**LABORATORY GROWN DIAMOND REPORT**

March 24, 2026  
IGI Report Number **LG776676287**  
Description **LABORATORY GROWN DIAMOND**  
Shape and Cutting Style **OVAL BRILLIANT**  
Measurements **7.02 X 5.11 X 3.20 MM**

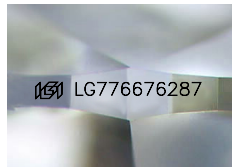
**GRADING RESULTS**

Carat Weight **0.79 CARAT**  
Color Grade **F**  
Clarity Grade **SI 1**

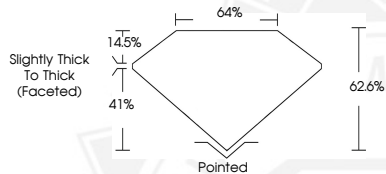
**ADDITIONAL GRADING INFORMATION**

Polish **VERY GOOD**  
Symmetry **VERY GOOD**  
Fluorescence **NONE**  
Inscription(s) **IGI LG776676287**

Comments: This Laboratory Grown Diamond was created by Chemical Vapor Deposition (CVD) growth process.  
Type IIa



Sample Image Used



March 24, 2026

IGI Report Number **LG776676287**

**OVAL BRILLIANT  
LABORATORY GROWN DIAMOND  
7.02 X 5.11 X 3.20 MM**

Carat Weight	<b>0.79 CARAT</b>
Color Grade	<b>F</b>
Clarity Grade	<b>SI 1</b>
Polish	<b>VERY GOOD</b>
Symmetry	<b>VERY GOOD</b>
Fluorescence	<b>NONE</b>
Inscription(s)	<b>IGI LG776676287</b>

Comments: This Laboratory Grown Diamond was created by Chemical Vapor Deposition (CVD) growth process. Type IIa



THIS DOCUMENT WAS PRODUCED WITH THE FOLLOWING SECURITY MEASURES: SPECIAL DOCUMENT PAPER, INK SCREENS, WATERMARK, BACKGROUND DESIGNS, HOLOGRAM AND OTHER SECURITY FEATURES NOT LISTED AND DO EXCEED DOCUMENT SECURITY INDUSTRY GUIDELINES.