



March 12, 2026

IGI Report Number **LG776676154**

PEAR BRILLIANT

LABORATORY GROWN DIAMOND

7.37 X 4.72 X 3.07 MM

Carat Weight **0.62 CARAT**

Color Grade **FANCY YELLOW**

Clarity Grade **VVS 2**

Polish **EXCELLENT**

Symmetry **EXCELLENT**

Fluorescence **NONE**

Inscription(s) **IGI LG776676154**

Comments: This Laboratory Grown Diamond was created by Chemical Vapor Deposition (CVD) growth process.

LABORATORY GROWN DIAMOND REPORT

March 12, 2026

IGI Report Number

LG776676154

Description

LABORATORY GROWN DIAMOND

Shape and Cutting Style

PEAR BRILLIANT

Measurements

7.37 X 4.72 X 3.07 MM

GRADING RESULTS

Carat Weight

0.62 CARAT

Color Grade

FANCY YELLOW

Clarity Grade

VVS 2

ADDITIONAL GRADING INFORMATION

Polish

EXCELLENT

Symmetry

EXCELLENT

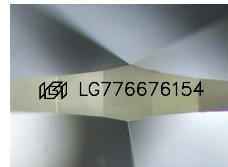
Fluorescence

NONE

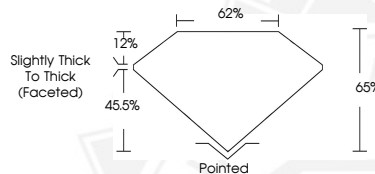
Inscription(s)

IGI LG776676154

Comments: This Laboratory Grown Diamond was created by Chemical Vapor Deposition (CVD) growth process.



Sample Image Used



March 12, 2026

IGI Report Number **LG776676154**

PEAR BRILLIANT

LABORATORY GROWN DIAMOND

7.37 X 4.72 X 3.07 MM

Carat Weight **0.62 CARAT**

Color Grade **FANCY YELLOW**

Clarity Grade **VVS 2**

Polish **EXCELLENT**

Symmetry **EXCELLENT**

Fluorescence **NONE**

Inscription(s) **IGI LG776676154**

Comments: This Laboratory Grown Diamond was created by Chemical Vapor Deposition (CVD) growth process.



THIS DOCUMENT WAS PRODUCED WITH THE FOLLOWING SECURITY MEASURES: SPECIAL DOCUMENT PAPER, INK SCREENS, WATERMARK, BACKGROUND DESIGNS, HOLOGRAM AND OTHER SECURITY FEATURES NOT LISTED AND DO EXCEED DOCUMENT SECURITY INDUSTRY GUIDELINES.