



ELECTRONIC COPY

LG776673630
Report verification at igi.org



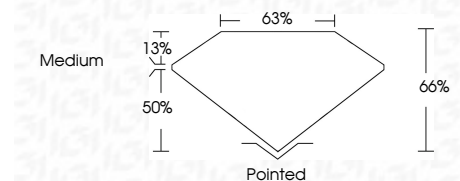
February 24, 2026
IGI Report Number **LG776673630**
Description **LABORATORY GROWN DIAMOND**

Shape and Cutting Style **CUT CORNERED
RECTANGULAR MODIFIED
BRILLIANT**

Measurements **11.25 X 8.00 X 5.28 MM**

GRADING RESULTS

Carat Weight **4.06 CARATS**
Color Grade **E**
Clarity Grade **VVS 2**



ADDITIONAL GRADING INFORMATION

Polish **EXCELLENT**
Symmetry **EXCELLENT**
Fluorescence **NONE**
Inscription(s) **IGI LG776673630**

Comments: This Laboratory Grown Diamond was created by Chemical Vapor Deposition (CVD) growth process. Type IIa



February 24, 2026
IGI Report No LG776673630
CUT CORNERED RECT. MODIFIED BRILLIANT
11.25 X 8.00 X 5.28 MM
4.06 CARATS
E
VVS 2
66%
50%
Medium
Pointed
EXCELLENT
EXCELLENT
NONE
IGI LG776673630
Comments: This Laboratory Grown Diamond was created by Chemical Vapor Deposition (CVD) growth process. Type IIa

LABORATORY GROWN DIAMOND REPORT

February 24, 2026
IGI Report Number **LG776673630**
Description **LABORATORY GROWN DIAMOND**
Shape and Cutting Style **CUT CORNERED RECTANGULAR
MODIFIED BRILLIANT**
Measurements **11.25 X 8.00 X 5.28 MM**

GRADING RESULTS

Carat Weight **4.06 CARATS**
Color Grade **E**
Clarity Grade **VVS 2**

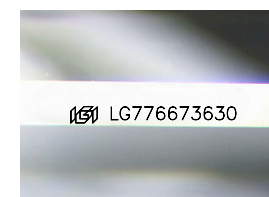
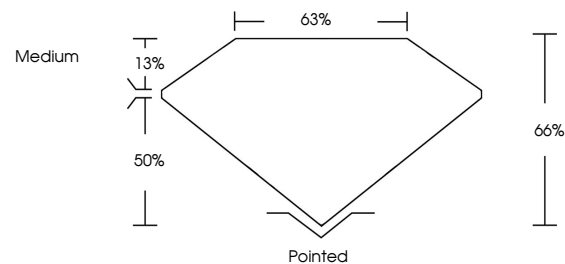
ADDITIONAL GRADING INFORMATION

Polish **EXCELLENT**
Symmetry **EXCELLENT**
Fluorescence **NONE**

Inscription(s) **IGI LG776673630**

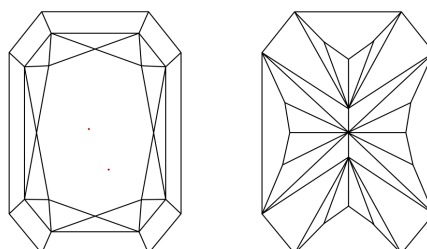
Comments: This Laboratory Grown Diamond was created by Chemical Vapor Deposition (CVD) growth process. Type IIa

PROPORTIONS



Sample Image Used

CLARITY CHARACTERISTICS



KEY TO SYMBOLS

Red symbols indicate internal characteristics.
Green symbols indicate external characteristics.

COLOR

D E F G H I J Faint Very Light Light

CLARITY

FL	IF	VVS ¹⁻²	VS ¹⁻²	SI ¹⁻²	I ¹⁻³
Flawless	Internally Flawless	Very Very Slightly Included	Very Slightly Included	Slightly Included	Included

