



ELECTRONIC COPY

LG776672264
Report verification at igi.org



March 9, 2026
IGI Report Number **LG776672264**

Description **LABORATORY GROWN DIAMOND**

Shape and Cutting Style **CUT CORNERED
RECTANGULAR MODIFIED
BRILLIANT**

Measurements **11.71 X 8.14 X 5.34 MM**

GRADING RESULTS

Carat Weight **5.01 CARATS**

Color Grade **FANCY VIVID GREEN**

Clarity Grade **VVS 2**

LABORATORY GROWN DIAMOND REPORT

March 9, 2026

IGI Report Number **LG776672264**

Description **LABORATORY GROWN DIAMOND**

Shape and Cutting Style **CUT CORNERED RECTANGULAR
MODIFIED BRILLIANT**

Measurements **11.71 X 8.14 X 5.34 MM**

GRADING RESULTS

Carat Weight **5.01 CARATS**

Color Grade **FANCY VIVID GREEN**

Clarity Grade **VVS 2**

ADDITIONAL GRADING INFORMATION

Polish **EXCELLENT**

Symmetry **EXCELLENT**

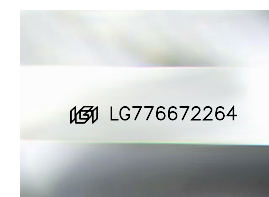
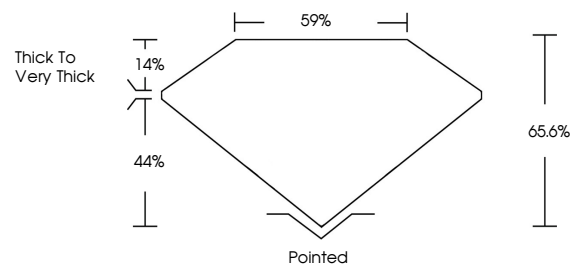
Fluorescence **NONE**

Inscription(s) **IGI LG776672264**

Comments: This Laboratory Grown Diamond was created by Chemical Vapor Deposition (CVD) growth process.

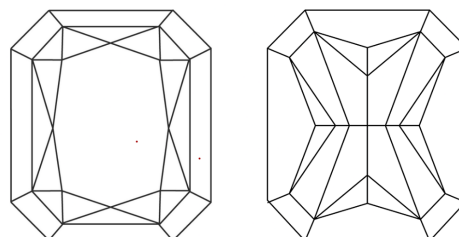
Indications of post-growth treatment.

PROPORTIONS



Sample Image Used

CLARITY CHARACTERISTICS



KEY TO SYMBOLS

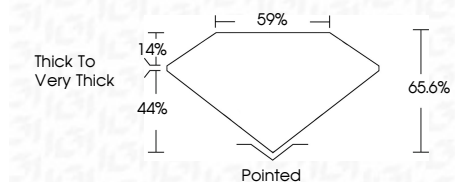
Red symbols indicate internal characteristics.
Green symbols indicate external characteristics.

COLOR

D E F G H I J Faint Very Light Light

CLARITY

FL	IF	VVS ¹⁻²	VS ¹⁻²	SI ¹⁻²	I ¹⁻³
Flawless	Internally Flawless	Very Very Slightly Included	Very Slightly Included	Slightly Included	Included



ADDITIONAL GRADING INFORMATION

Polish **EXCELLENT**

Symmetry **EXCELLENT**

Fluorescence **NONE**

Inscription(s) **IGI LG776672264**

Comments: This Laboratory Grown Diamond was created by Chemical Vapor Deposition (CVD) growth process. Indications of post-growth treatment.



March 9, 2026
IGI Report No LG776672264
CUT CORNERED RECT. MODIFIED BRILLIANT
11.71 X 8.14 X 5.34 MM
5.01 CARATS
FANCY VIVID GREEN
VVS 2
65.6%
59%
Thick to Very Thick
Pointed
EXCELLENT
EXCELLENT
NONE
IGI LG776672264

Comments: This Laboratory Grown Diamond was created by Chemical Vapor Deposition (CVD) growth process. Indications of post-growth treatment.